

## Datasheet for ABIN950031 **anti-PLK1 antibody (AA 1-603)**

### 3 Images



[Go to Product page](#)

### Overview

Quantity:	100 µL
Target:	PLK1
Binding Specificity:	AA 1-603
Reactivity:	Human
Host:	Rabbit
Clonality:	Polyclonal
Conjugate:	This PLK1 antibody is un-conjugated
Application:	Western Blotting (WB), Immunoprecipitation (IP)

### Product Details

Purpose:	Rabbit polyclonal antibody raised against a full-length human PLK1 protein.
Immunogen:	PLK1 (NP_005021.2, 1 a.a. ~ 603 a.a) full-length human protein.
Sequence:	MSAAVTAGKL ARAPADPGKA GVPGVAAPGA PAAAPPAKEI PEVLVDPRSR RRYVRGRFLG KGGFAKCFEI SDADTKEVFA GKIVPKSLLL KPHQREKMSM EISIHRS LAH QHVVG FHGFF EDNDFV FVVL ELCRRRSLLE LHKRRKALTE PEARYYLRQI VLGCQYLHRN RVIHRDLKLG NLFLNEDLEV KIGDFGLATK VEYDGERKKT LCGTPNYIAP EVLSKKGHSF EVDVWSIGCI MYTLLVGKPP FETSCLKETY LRIKKNEYSI PKHINPVAAS LIQKMLQTDP TARPTINELL NDEFFTSGYI PARLPITCLT IPPRFSIAPS SLDPSNRKPL TVLNKGLENP LPERPREKEE PVVRETGEV DCHLSDMLQQ LHSVNAKSPS ERGLVRQEEA EDPACIPIFW VSKWVDYSDK YGLGYQLCDN SVGVLFNDST RLILYNDGDS LQYIERDGTE SYLTVSSHPN SLMKKITLLK YFRNYMSEHL LKAGANITPR EGDELARLPY LRTWFRTRSA IILHLSNGSV QINFFQDHTK LILCPLMAAV TYIDEKRDFR TYRLSLLEEY GCCKELASRL RYARTMVDKL LSSRSASNRL KAS

## Product Details

---

Cross-Reactivity:	Human, Mouse
Characteristics:	Antibody reactive against mammalian transfected lysate.

## Target Details

---

Target:	PLK1
Alternative Name:	PLK1 ( <a href="#">PLK1 Products</a> )
Background:	Full Gene Name: polo-like kinase 1 (Drosophila) Synonyms: PLK,STPK13
Gene ID:	5347
NCBI Accession:	<a href="#">NM_005030</a>
Pathways:	<a href="#">Cell Division Cycle, M Phase</a>

## Application Details

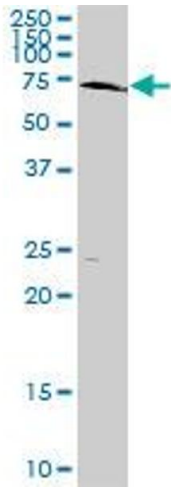
---

Application Notes:	Optimal working dilution should be determined by the investigator.
Restrictions:	For Research Use only

## Handling

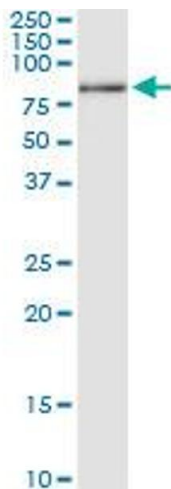
---

Format:	Liquid
Buffer:	No additive
Preservative:	Without preservative
Handling Advice:	Aliquot to avoid repeated freezing and thawing.
Storage:	-20 °C
Storage Comment:	Store at -20°C or lower. Aliquot to avoid repeated freezing and thawing.



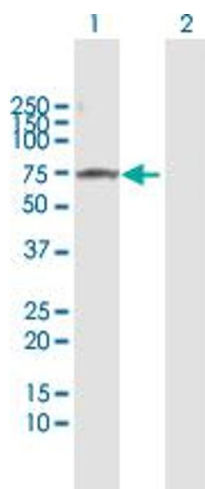
### Western Blotting

**Image 1.** PLK1 MaxPab rabbit polyclonal antibody. Western Blot analysis of PLK1 expression in mouse spleen.



### Immunoprecipitation

**Image 2.** Immunoprecipitation of PLK1 transfected lysate using anti-PLK1 MaxPab rabbit polyclonal antibody and Protein A Magnetic Bead , and immunoblotted with PLK1 purified MaxPab mouse polyclonal antibody (B01P) .



### Western Blotting

**Image 3.** Western Blot analysis of PLK1 expression in transfected 293T cell line by PLK1 MaxPab polyclonal antibody.

Lane 1: PLK1 transfected lysate(68.30 KDa).

Lane 2: Non-transfected lysate.