



[Go to Product page](#)

Datasheet for ABIN950104

## anti-TUBB1 antibody (AA 1-451)

### 5 Images

#### Overview

Quantity:	100 µL
Target:	TUBB1
Binding Specificity:	AA 1-451
Reactivity:	Human
Host:	Rabbit
Clonality:	Polyclonal
Conjugate:	This TUBB1 antibody is un-conjugated
Application:	Western Blotting (WB), Immunoprecipitation (IP)

#### Product Details

Purpose:	Rabbit polyclonal antibody raised against a full-length human TUBB1 protein.
Immunogen:	TUBB1 (NP_110400.1, 1 a.a. ~ 451 a.a) full-length human protein.
Sequence:	MREIVHIQIG QCGNQIGAKF WEMIGEEHGI DLAGSDRGAS ALQLERISVY YNEAYGRKYV PRAVLVDLEP GTMDSIRSSK LGALFQPDSF VHGNNGAGNN WAKGHYTEGA ELIENVLEVV RHESECDCL QGFQIVHSLG GGTGSGMGTL LMNKIREEYP DRIMNSFSVM PSPKVSDTVV EPYNAVLSIH QLIENADACF CIDNEALYDI CFRTLKLTTP TYGDLNHLVS LTMSGITTSL RFPGQLNADL RKLAVNMVPP PRLHFFMPGF APLTAQGSQQ YRALSAELT QQMFDARNTM AACDLRRGRY LTVACIFRGK MSTKEVDQQL LSVQTRNSSC FVEWIPNNVK VAVCDIPPRG LSMAATFIGN NTAIQEIFNR VSEHFSAMFK RKAHVHWYTS EGMIDINEFGE AENNIHDLVS EYQQFQDAKA VLEEDEEVTE EAEMEPEDKG H
Cross-Reactivity:	Human, Mouse

## Product Details

---

Characteristics: Antibody reactive against mammalian transfected lysate.

## Target Details

---

Target: TUBB1

Alternative Name: TUBB1 ([TUBB1 Products](#))

Background: Full Gene Name: tubulin, beta 1  
Synonyms: dJ543J19.4

Gene ID: 81027

NCBI Accession: [NM\\_030773](#)

Pathways: [Microtubule Dynamics](#)

## Application Details

---

Application Notes: Optimal working dilution should be determined by the investigator.

Restrictions: For Research Use only

## Handling

---

Format: Liquid

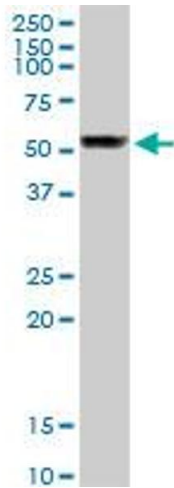
Buffer: No additive

Preservative: Without preservative

Handling Advice: Aliquot to avoid repeated freezing and thawing.

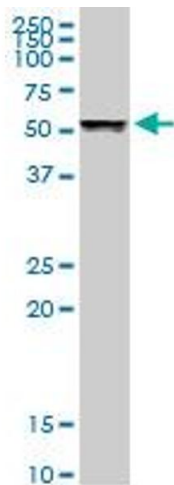
Storage: -20 °C

Storage Comment: Store at -20°C or lower. Aliquot to avoid repeated freezing and thawing.



#### Western Blotting

**Image 1.** TUBB1 MaxPab rabbit polyclonal antibody.  
Western Blot analysis of TUBB1 expression in mouse lung.



#### Western Blotting

**Image 2.** TUBB1 MaxPab rabbit polyclonal antibody.  
Western Blot analysis of TUBB1 expression in human liver.



#### Western Blotting

**Image 3.** TUBB1 MaxPab rabbit polyclonal antibody.  
Western Blot analysis of TUBB1 expression in A-431.

Please check the [product details page](#) for more images. Overall 5 images are available for ABIN950104.