



Datasheet for ABIN950109
anti-AMOTL1 antibody (AA 1-956)



[Go to Product page](#)

3 Images

Overview

Quantity:	100 µL
Target:	AMOTL1
Binding Specificity:	AA 1-956
Reactivity:	Human
Host:	Rabbit
Clonality:	Polyclonal
Conjugate:	This AMOTL1 antibody is un-conjugated
Application:	Western Blotting (WB), Immunoprecipitation (IP)

Product Details

Purpose:	Rabbit polyclonal antibody raised against a full-length human AMOTL1 protein.
Immunogen:	AMOTL1 (NP_570899.1, 1 a.a. ~ 956 a.a) full-length human protein.
Sequence:	MWRAKLRRGT CEPAVKGGSPS ACYSPSSPVQ VLEDSTYFSP DFQLYSGRHE TSALTVEATS SIREKVVEDP LCNFHSPNFL RISEVEMRGS EDAAAGTVLQ RLIQEQLRYG TPTENMNLLA IQHQATGSAG PAHPTNNFSS TENLTQEDPQ MUYQSARQEP QGQEHQVDNT VMEKQVRSTQ PQQNNEELPT YEEAKAQSQF FRGQQQQQQQ QGAVGHGYM AGGTSQKSRT EGRPTVNRAN SGQAHKDEAL KELKQGHVRS LSERIMQLSL ERNGAKQHLP GSGNGKGFV GGGPSPAQPA GKVLDPGPP PEYPFKTKQM MSPVSKTQEH GLFYGDQHPG MLHEMVKPYP APQPVRTDVA VLRYPPEY GVTSRPCQLP FPSTMQQHSP MSSQTSSASG PLHSVSLPLP LPMALGAPQP PPAASPSQQL GPDAFAIVER AQQMVEILTE ENRVLHQELQ GYYDNADKLH KFEKELQRIS EAYESLVKST TKRESLDKAM RNKLEGEIRR LHDFNRDLRD RLETANRQLS SREYEGHEDK AAEGHYASQN KEFLKEKEKL EMELAAVRTA SEDHRRHIEI LDQALSNAQA RVIKLEEELR

Product Details

EKQAYVEKVE KLQQALTQLQ SACEKREQME RRLRTWLERE LDALRTQQKH GNGQPANMPE
YNAPALLELIV REKEERILAL EADMTKWEQK YLEESTIRHF AMNAAATAAA ERDTTIINHS
RNGSYGESSL EAHIWQEEEE VVQANRRCQD MEYTIKNLHA KIEKDAMIK VLQQRSRKDA
GKTDSSSLRP ARSVPSIAAA TGTHSRQTSL TSSQLAEEKK EEKTWKGSIG LLLGKEHHEH
ASAPLLPPPP TSALSSIAST TAASSAHAKT GSKDSSTQTD KSAELFWPSM ASLPSRGRLS
TTPAHSPVLK HPAAKGTAEK LENSFGHGKS PDHRGRVSSL LHKPEFPDGE MMEVLI

Cross-Reactivity: Human, Mouse

Characteristics: Antibody reactive against mammalian transfected lysate.

Target Details

Target: AMOTL1

Alternative Name: AMOTL1 ([AMOTL1 Products](#))

Background: Full Gene Name: angiotenin like 1
Synonyms: JEAP

Gene ID: 154810

NCBI Accession: [NM_130847](#)

Application Details

Application Notes: Optimal working dilution should be determined by the investigator.

Restrictions: For Research Use only

Handling

Format: Liquid

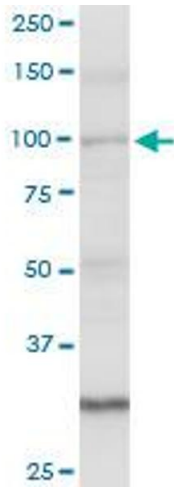
Buffer: No additive

Preservative: Without preservative

Handling Advice: Aliquot to avoid repeated freezing and thawing.

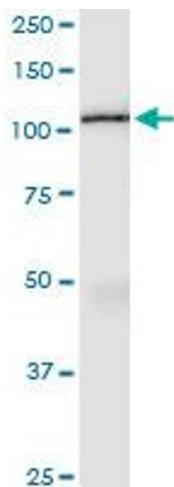
Storage: -20 °C

Storage Comment: Store at -20°C or lower. Aliquot to avoid repeated freezing and thawing.



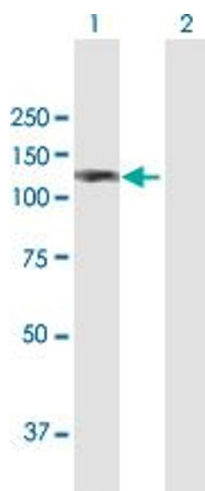
Western Blotting

Image 1. AMOTL1 MaxPab rabbit polyclonal antibody. Western Blot analysis of AMOTL1 expression in mouse liver.



Immunoprecipitation

Image 2. Immunoprecipitation of AMOTL1 transfected lysate using anti-AMOTL1 MaxPab rabbit polyclonal antibody and Protein A Magnetic Bead, and immunoblotted with AMOTL1 purified MaxPab mouse polyclonal antibody (B01P).



Western Blotting

Image 3. Western Blot analysis of AMOTL1 expression in transfected 293T cell line by AMOTL1 MaxPab polyclonal antibody.

Lane 1: AMOTL1 transfected lysate(106.6 kDa).

Lane 2: Non-transfected lysate.