

Datasheet for ABIN950112
anti-SLC27A1 antibody (AA 1-646)



[Go to Product page](#)

3 Images

Overview

Quantity:	100 µL
Target:	SLC27A1 (FATP1)
Binding Specificity:	AA 1-646
Reactivity:	Human
Host:	Rabbit
Clonality:	Polyclonal
Conjugate:	This SLC27A1 antibody is un-conjugated
Application:	Western Blotting (WB), Immunoprecipitation (IP)

Product Details

Purpose:	Rabbit polyclonal antibody raised against a full-length human SLC27A1 protein.
Immunogen:	SLC27A1 (NP_940982.1, 1 a.a. ~ 646 a.a) full-length human protein.
Sequence:	MRAPGAGAAS VVSLALLWLL GLPWTWSAAA ALGVYVGS GG WRFLRIVCKT ARDLFGLSV LIRVRLELRR HQRAGHTIPR IFQAVVQRQP ERLALVDAGT GECWTFAQLD AYSNAVANLF RQLGFAPGDV VAIFLEGRPE FVGLWLGLAK AGMEAALLNV NLRREPLAFC LGTSGAKALI FGGEMVAAVA EVSGHLGKSL IKFCSGDLGP EGILPDTHLL DPLLKEASTA PLAQIPSKGM DDRLFYIYTS GTTGLPKAAI VVHSRYRMA AFGHHAYRMQ AADVLYDCLP LYHSAGNIIG VGQCLIYGLT VVLRKKFSAS RFWDDCIKYN CTVVQYIGEI CRYLLKQPVR EAERRHRVRL AVGNGLRPAI WEEFTERFGV RQIGEFYGAT ECNCSIANMD GKVGS CGFNS RILPHVYPIR LVKVNEDTME LLRDAQGLCI PCQAGEPGLL VGQINQQDPL RRFDDGYVSES ATSKKIAHSV FSKGD SAYLS GDVLVMDDELG YMYFRDRSGD TFRWRGENVS TTEVEGVLSR LLGQTDVAVY GVAVPGVEGK AGMAAVADPH SLLDPNAIYQ ELQKVLAPYA RPIFLRLLPQ VDTTGTFKIQ

Product Details

KTRLQREGFD PRQTSDRLFF LDLKQGHYLP LNEAVYTRIC SGAFAL

Cross-Reactivity: Human, Mouse

Characteristics: Antibody reactive against mammalian transfected lysate.

Target Details

Target: SLC27A1 (FATP1)

Alternative Name: SLC27A1 ([FATP1 Products](#))

Background: Full Gene Name: solute carrier family 27 (fatty acid transporter), member 1
Synonyms: ACSVL5,FATP,FATP1,FLJ00336,MGC71751

Gene ID: 376497

NCBI Accession: [NM_198580](#)

Pathways: [Inositol Metabolic Process](#), [Regulation of Lipid Metabolism by PPARAlpha](#)

Application Details

Application Notes: Optimal working dilution should be determined by the investigator.

Restrictions: For Research Use only

Handling

Format: Liquid

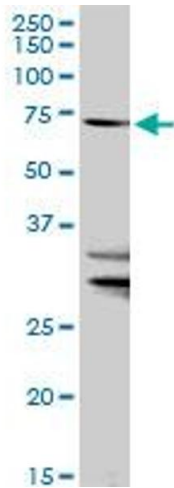
Buffer: No additive

Preservative: Without preservative

Handling Advice: Aliquot to avoid repeated freezing and thawing.

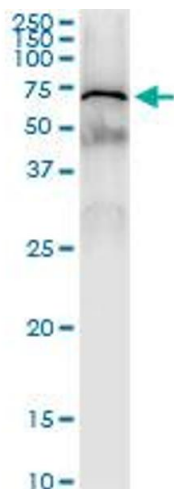
Storage: -20 °C

Storage Comment: Store at -20°C or lower. Aliquot to avoid repeated freezing and thawing.



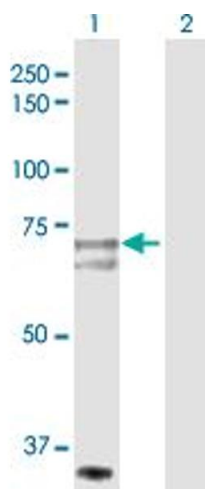
Western Blotting

Image 1. SLC27A1 MaxPab rabbit polyclonal antibody. Western Blot analysis of SLC27A1 expression in mouse lung.



Immunoprecipitation

Image 2. Immunoprecipitation of SLC27A1 transfected lysate using anti-SLC27A1 MaxPab rabbit polyclonal antibody and Protein A Magnetic Bead, and immunoblotted with SLC27A1 purified MaxPab mouse polyclonal antibody (B01P).



Western Blotting

Image 3. Western Blot analysis of SLC27A1 expression in transfected 293T cell line by SLC27A1 MaxPab polyclonal antibody.

Lane 1: SLC27A1 transfected lysate(71.10 KDa).

Lane 2: Non-transfected lysate.