

Datasheet for ABIN950177
anti-HSD11B1L antibody (C-Term)

3 Images

[Go to Product page](#)

Overview

Quantity:	0.4 mL
Target:	HSD11B1L
Binding Specificity:	AA 263-291, C-Term
Reactivity:	Human
Host:	Rabbit
Clonality:	Polyclonal
Conjugate:	This HSD11B1L antibody is un-conjugated
Application:	Western Blotting (WB), Immunofluorescence (IF), Immunohistochemistry (Paraffin-embedded Sections) (IHC (p)), Enzyme Immunoassay (EIA)

Product Details

Immunogen:	Synthetic peptide - KLH conjugated - corresponding to the C-terminal region (between 263-291aa) of human 11-beta-HSD3 / HSD11B1L at C-term.
Isotype:	Ig Fraction
Specificity:	This antibody detects 11-beta-HSD3 / HSD11B1L at C-term.
Cross-Reactivity (Details):	Species reactivity (tested):Human
Purification:	Purified through a protein A column, followed by peptide affinity purification

Target Details

Target:	HSD11B1L
---------	----------

Target Details

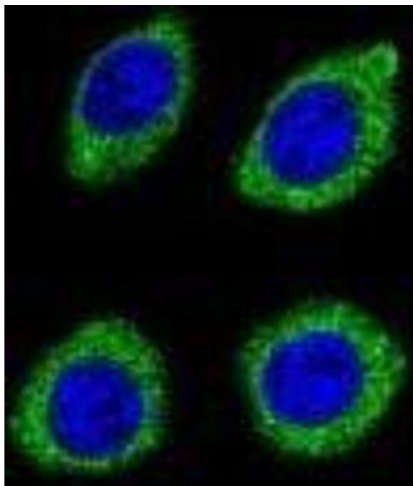
Alternative Name:	11-beta-HSD3 / HSD11B1L (HSD11B1L Products)
Background:	Synonyms: 1-beta-hydroxysteroid dehydrogenase type 3, HSD3, SCDR10, Short-chain dehydrogenase/reductase 10
Gene ID:	374875
NCBI Accession:	NP_940935

Application Details

Application Notes:	Optimal working dilution should be determined by the investigator.
Restrictions:	For Research Use only

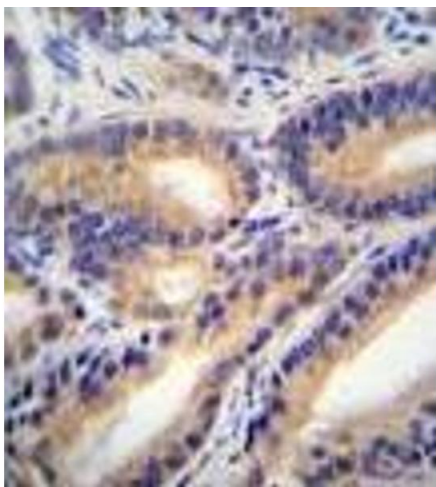
Handling

Format:	Liquid
Concentration:	0.25 mg/mL
Buffer:	PBS with 0.09 % (W/V) sodium azide
Preservative:	Sodium azide
Precaution of Use:	This product contains sodium azide: a POISONOUS AND HAZARDOUS SUBSTANCE which should be handled by trained staff only.
Handling Advice:	Avoid repeated freezing and thawing.
Storage:	4 °C/-20 °C
Storage Comment:	Store the antibody undiluted at 2-8 °C for one month or (in aliquots) at -20 °C for longer.



Immunofluorescence

Image 1. Confocal immunofluorescent analysis of HSD11B1L Antibody) with U-251MG cell followed by Alexa Fluor 488-conjugated goat anti-rabbit IgG (green). DAPI was used to stain the cell nuclear (blue).



Immunohistochemistry (Paraffin-embedded Sections)

Image 2. HSD11B1L Antibody : immunohistochemistry analysis in formalin fixed and paraffin embedded human prostate carcinoma followed by peroxidase conjugation of the secondary antibody and DAB staining.



Western Blotting

Image 3. HSD11B1L Antibody Western blot analysis in K562 cell line lysates (35ug/lane).This demonstrates the HSD11B1L antibody detected the HSD11B1L protein (arrow).