

Datasheet for ABIN950197
anti-AASS antibody (C-Term)

2 Images

[Go to Product page](#)

Overview

Quantity:	0.4 mL
Target:	AASS
Binding Specificity:	AA 812-841, C-Term
Reactivity:	Human
Host:	Rabbit
Clonality:	Polyclonal
Conjugate:	This AASS antibody is un-conjugated
Application:	Western Blotting (WB), Enzyme Immunoassay (EIA)

Product Details

Immunogen:	KLH conjugated synthetic peptide between 812-841 amino acids from the C-terminal region of human AASS.
Isotype:	Ig Fraction
Specificity:	This antibody reacts to AASS.
Cross-Reactivity (Details):	Species reactivity (tested):Human.
Purification:	Saturated Ammonium Sulfate (SAS) precipitation

Target Details

Target:	AASS
Alternative Name:	AASS (AASS Products)

Target Details

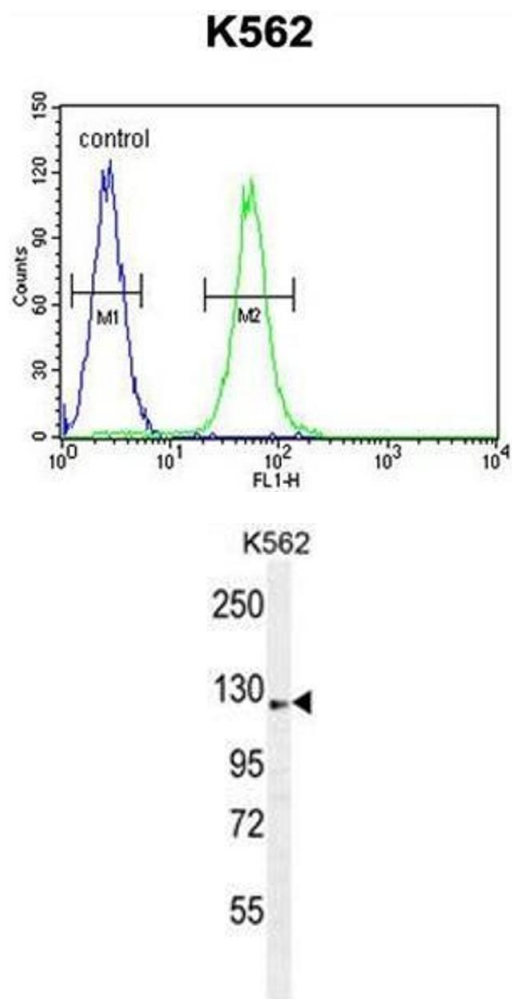
Background:	This gene encodes a bifunctional enzyme that catalyzes the first two steps in the mammalian lysine degradation pathway. The N-terminal and the C-terminal portions of this enzyme contain lysine-ketoglutarate reductase and saccharopine dehydrogenase activity, respectively, resulting in the conversion of lysine to alpha-aminoadipic semialdehyde. Mutations in this gene are associated with familial hyperlysinemia.Synonyms: Alpha-aminoadipic semialdehyde synthase, LKR/SDH, mitochondrial
Gene ID:	10157
NCBI Accession:	NP_005754
Pathways:	SARS-CoV-2 Protein Interactome

Application Details

Application Notes:	Optimal working dilution should be determined by the investigator.
Restrictions:	For Research Use only

Handling

Format:	Liquid
Concentration:	0.25 mg/mL
Buffer:	PBS with 0.09 % (W/V) sodium azide as preservative
Preservative:	Sodium azide
Precaution of Use:	This product contains sodium azide: a POISONOUS AND HAZARDOUS SUBSTANCE which should be handled by trained staff only.
Handling Advice:	Avoid repeated freezing and thawing.
Storage:	4 °C/-20 °C
Storage Comment:	Store the antibody undiluted at 2-8 °C for one month or (in aliquots) at -20 °C for longer.



Flow Cytometry

Image 1. AASS Antibody (C-term) flow cytometric analysis of K562 cells (right histogram) compared to a negative control cell (left histogram).FITC-conjugated goat-anti-rabbit secondary antibodies were used for the analysis.

Western Blotting

Image 2. AASS Antibody (C-term) western blot analysis in K562 cell line lysates (35 µg/lane).This demonstrates the AASS antibody detected the AASS protein (arrow).