

Datasheet for ABIN950204

## anti-Abcd2 antibody (Middle Region)



[Go to Product page](#)

### 1 Image

#### Overview

Quantity:	0.4 mL
Target:	Abcd2
Binding Specificity:	AA 276-306, Middle Region
Reactivity:	Human, Mouse
Host:	Rabbit
Clonality:	Polyclonal
Conjugate:	This Abcd2 antibody is un-conjugated
Application:	Western Blotting (WB), Enzyme Immunoassay (EIA)

#### Product Details

Immunogen:	KLH conjugated synthetic peptide between 276~306 amino acids from the Central region of human ABCD2.
Isotype:	Ig Fraction
Specificity:	This antibody reacts to ABCD2.
Cross-Reactivity (Details):	Species reactivity (tested): Human and Mouse.
Purification:	Affinity chromatography on Protein A

#### Target Details

Target:	Abcd2
Alternative Name:	ABCD2 / ALDR ( <a href="#">Abcd2 Products</a> )

## Target Details

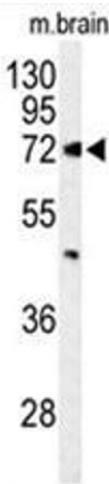
Background:	ABCD2 is a member of the superfamily of ATP-binding cassette (ABC) transporters. ABC proteins transport various molecules across extra- and intra-cellular membranes. ABC genes are divided into seven distinct subfamilies (ABC1, MDR/TAP, MRP, ALD, OABP, GCN20, White). This protein is a member of the ALD subfamily, which is involved in peroxisomal import of fatty acids and/or fatty acyl-CoAs in the organelle. All known peroxisomal ABC transporters are half transporters which require a partner half transporter molecule to form a functional homodimeric or heterodimeric transporter. The function of this peroxisomal membrane protein is unknown, however this protein is speculated to function as a dimerization partner of ABCD1 and/or other peroxisomal ABC transporters.Synonyms: ALD1, ALDL1, ALDRP, ATP-binding cassette sub-family D member 2, Adrenoleukodystrophy-like 1, Adrenoleukodystrophy-related protein
Gene ID:	225
NCBI Accession:	<a href="#">NP_005155</a>
Pathways:	<a href="#">Monocarboxylic Acid Catabolic Process</a>

## Application Details

Application Notes:	Optimal working dilution should be determined by the investigator.
Restrictions:	For Research Use only

## Handling

Format:	Liquid
Concentration:	0.25 mg/mL
Buffer:	PBS containing 0.09 % (W/V) sodium azide as preservative
Preservative:	Sodium azide
Precaution of Use:	This product contains sodium azide: a POISONOUS AND HAZARDOUS SUBSTANCE which should be handled by trained staff only.
Handling Advice:	Avoid repeated freezing and thawing.
Storage:	4 °C/-20 °C
Storage Comment:	Store the antibody undiluted at 2-8 °C for one month or (in aliquots) at -20 °C for longer.



Western Blotting

**Image 1.** Western blot analysis of ABCD2 Antibody (Center) in mouse brain tissue lysates (35 µg/lane). ABCD2 (arrow) was detected using the purified Pab.