

Datasheet for ABIN950207
anti-ABCF1 antibody (C-Term)[Go to Product page](#)

3 Images

Overview

| | |
|----------------------|--|
| Quantity: | 0.4 mL |
| Target: | ABCF1 |
| Binding Specificity: | AA 694-724, C-Term |
| Reactivity: | Human, Mouse |
| Host: | Rabbit |
| Clonality: | Polyclonal |
| Conjugate: | This ABCF1 antibody is un-conjugated |
| Application: | Western Blotting (WB), Immunohistochemistry (Paraffin-embedded Sections) (IHC (p)), Enzyme Immunoassay (EIA) |

Product Details

| | |
|-----------------------------|--|
| Immunogen: | KLH conjugated synthetic peptide between 694~724 amino acids from the C-terminal region of human ABCF1 |
| Isotype: | Ig Fraction |
| Specificity: | This antibody reacts to ABCF1. |
| Cross-Reactivity (Details): | Species reactivity (tested): Human and Mouse. |
| Purification: | Affinity chromatography on Protein A |

Target Details

| | |
|---------|-------|
| Target: | ABCF1 |
|---------|-------|

Target Details

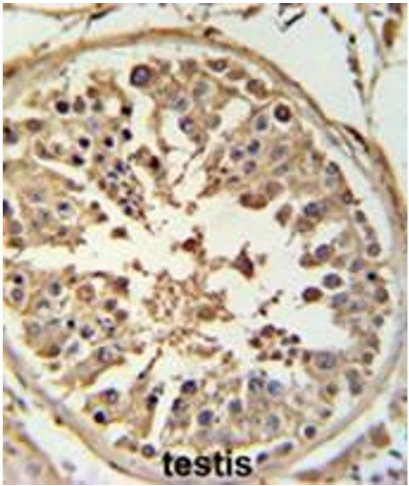
| | |
|-------------------|--|
| Alternative Name: | ABCF1 (ABCF1 Products) |
| Background: | <p>The protein is a member of the superfamily of ATP-binding cassette (ABC) transporters. ABC proteins transport various molecules across extra- and intra-cellular membranes. ABC proteins are divided into seven distinct subfamilies (ABC1, MDR/TAP, MRP, ALD, OABP, GCN20, White). This protein is a member of the GCN20 subfamily. Unlike other members of the superfamily, this protein lacks the transmembrane domains which are characteristic of most ABC transporters. This protein may be regulated by tumor necrosis factor-alpha and play a role in enhancement of protein synthesis and the inflammation process. Synonyms: ABC50, ATP-binding cassette 50, ATP-binding cassette sub-family F member 1, TNF-alpha-stimulated ABC protein</p> |
| Gene ID: | 23 |
| NCBI Accession: | NP_001020262 |

Application Details

| | |
|--------------------|--|
| Application Notes: | Optimal working dilution should be determined by the investigator. |
| Restrictions: | For Research Use only |

Handling

| | |
|--------------------|--|
| Format: | Liquid |
| Concentration: | 0.25 mg/mL |
| Buffer: | PBS containing 0.09 % (W/V) sodium azide as preservative |
| Preservative: | Sodium azide |
| Precaution of Use: | This product contains sodium azide: a POISONOUS AND HAZARDOUS SUBSTANCE which should be handled by trained staff only. |
| Handling Advice: | Avoid repeated freezing and thawing. |
| Storage: | 4 °C/-20 °C |
| Storage Comment: | Store the antibody undiluted at 2-8 °C for one month or (in aliquots) at -20 °C for longer. |



Immunohistochemistry (Paraffin-embedded Sections)

Image 1. ABCF1 Antibody (C-term) IHC analysis in formalin fixed and paraffin embedded human testis tissue followed by peroxidase conjugation of the secondary antibody and DAB staining. This data demonstrates the use of the ABCF1 Antibody (C-term) for immunohistochemistry. Clinical relevance has not been evaluated.



Western Blotting

Image 2. Western blot analysis of ABCF1 Antibody (C-term) in mouse NIH-3T3 cell line lysates (35 µg/lane). ABCF1 (arrow) was detected using the purified Pab.

Western Blotting

Image 3. Western blot analysis of ABCF1 Antibody (C-term)?Cat. #AP50022PU-N) in NCI-H460 cell line lysates (35µg/lane). ABCF1 (arrow) was detected using the purified Pab.