

Datasheet for ABIN950212
anti-ABHD14B antibody (C-Term)[Go to Product page](#)

3 Images

Overview

Quantity:	0.4 mL
Target:	ABHD14B
Binding Specificity:	C-Term
Reactivity:	Human
Host:	Rabbit
Clonality:	Polyclonal
Conjugate:	This ABHD14B antibody is un-conjugated
Application:	Western Blotting (WB), Immunohistochemistry (Paraffin-embedded Sections) (IHC (p)), Enzyme Immunoassay (EIA)

Product Details

Isotype:	Ig Fraction
Specificity:	This antibody reacts to ABHD14B.
Cross-Reactivity (Details):	Species reactivity (tested):Human.
Purification:	Affinity chromatography on Protein A

Target Details

Target:	ABHD14B
Alternative Name:	ABHD14B (ABHD14B Products)
Background:	ABHEB has hydrolase activity towards p-nitrophenyl butyrate (in vitro). It may activate

Target Details

	transcription.Synonyms: Abhydrolase domain-containing protein 14B, CIB
Gene ID:	84836
NCBI Accession:	NP_001139786

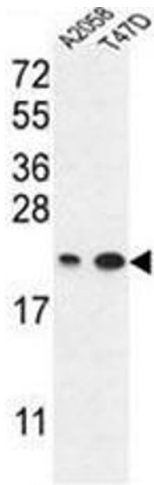
Application Details

Application Notes:	Optimal working dilution should be determined by the investigator.
Restrictions:	For Research Use only

Handling

Format:	Liquid
Concentration:	0.25 mg/mL
Buffer:	PBS containing 0.09 % (W/V) sodium azide as preservative
Preservative:	Sodium azide
Precaution of Use:	This product contains sodium azide: a POISONOUS AND HAZARDOUS SUBSTANCE which should be handled by trained staff only.
Handling Advice:	Avoid repeated freezing and thawing.
Storage:	4 °C/-20 °C
Storage Comment:	Store the antibody undiluted at 2-8 °C for one month or (in aliquots) at -20 °C for longer.

Images



Western Blotting

Image 1. ABHEB Antibody (C-term) western blot analysis in A2058,T47D cell line lysates (35 µg/lane). This demonstrates the ABHEB antibody detected the ABHEB protein (arrow).

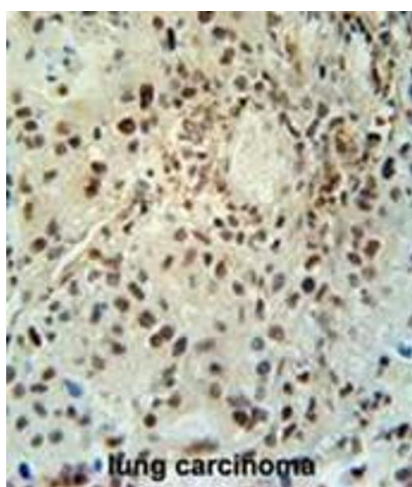
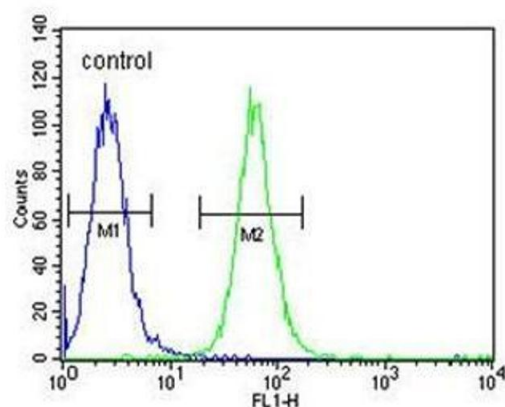
A2058**Flow Cytometry**

Image 2. ABHEB Antibody (C-term) flow cytometric analysis of A2058 cells (right histogram) compared to a negative control cell (left histogram). FITC-conjugated goat-anti-rabbit secondary antibodies were used for the analysis.

Immunohistochemistry (Paraffin-embedded Sections)

Image 3. ABHEB Antibody (C-term) immunohistochemistry analysis in formalin fixed and paraffin embedded human lung carcinoma followed by peroxidase conjugation of the secondary antibody and DAB staining. This data demonstrates the use of the ABHEB Antibody (C-term) for immunohistochemistry. Clinical relevance has not been evaluated.