

Datasheet for ABIN950216  
**anti-ABI2 antibody (N-Term)**[Go to Product page](#)

## 2 Images

## Overview

|                      |   |
|----------------------|---|
| Quantity:            | 0.4 mL  |
| Target:              | ABI2  |
| Binding Specificity: | AA 1-30, N-Term                                 |
| Reactivity:          | Human, Mouse                                    |
| Host:                | Rabbit  |
| Clonality:           | Polyclonal                                      |
| Conjugate:           | This ABI2 antibody is un-conjugated             |
| Application:         | Western Blotting (WB), Enzyme Immunoassay (EIA) |

## Product Details

|                             |  |
|-----------------------------|--|
| Immunogen:                  | KLH conjugated synthetic peptide between 1-30 amino acids from the N-terminal region of human ABI2 |
| Isotype:                    | Ig Fraction  |
| Specificity:                | This antibody reacts to ABI2.  |
| Cross-Reactivity (Details): | Species reactivity (tested): Human and Mouse.  |
| Purification:               | Affinity chromatography on Protein A   |

## Target Details

|                   |  |
|-------------------|--|
| Target:           | ABI2                                   |
| Alternative Name: | ABI2 ( <a href="#">ABI2 Products</a> ) |

## Target Details

|             |  |
|-------------|--|
| Background: | ABL2 may act in regulation of cell growth and transformation by interacting with nonreceptor tyrosine kinases ABL1 and/or ABL2. May be involved in cytoskeletal reorganization. Regulates ABL1/c-Abl-mediated phosphorylation of MENA.Synonyms: ARGBPIA, Abelson interactor 2, Abl interactor 2, Abl-binding protein 3, Arg-binding protein 1, argBPIA |
|-------------|--|

|          |       |
|----------|-------|
| Gene ID: | 10152 |
|----------|-------|

|                 |                           |
|-----------------|---------------------------|
| NCBI Accession: | <a href="#">NP_005750</a> |
|-----------------|---------------------------|

## Application Details

|                    |  |
|--------------------|--|
| Application Notes: | Optimal working dilution should be determined by the investigator. |
|--------------------|--|

|               |                       |
|---------------|-----------------------|
| Restrictions: | For Research Use only |
|---------------|-----------------------|

## Handling

|         |        |
|---------|--------|
| Format: | Liquid |
|---------|--------|

|                |            |
|----------------|------------|
| Concentration: | 0.25 mg/mL |
|----------------|------------|

|         |  |
|---------|--|
| Buffer: | PBS containing 0.09 % (W/V) sodium azide as preservative |
|---------|--|

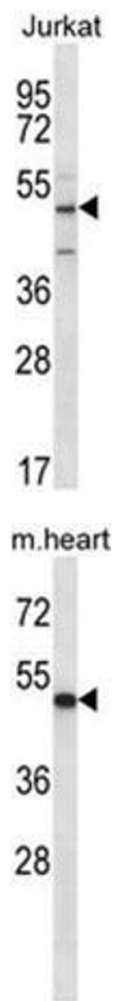
|               |              |
|---------------|--------------|
| Preservative: | Sodium azide |
|---------------|--------------|

|                    |  |
|--------------------|--|
| Precaution of Use: | This product contains sodium azide: a POISONOUS AND HAZARDOUS SUBSTANCE which should be handled by trained staff only. |
|--------------------|--|

|                  |                                      |
|------------------|--------------------------------------|
| Handling Advice: | Avoid repeated freezing and thawing. |
|------------------|--------------------------------------|

|          |             |
|----------|-------------|
| Storage: | 4 °C/-20 °C |
|----------|-------------|

|                  |   |
|------------------|---|
| Storage Comment: | Store the antibody undiluted at 2-8 °C for one month or (in aliquots) at -20 °C for longer. |
|------------------|---|



Western Blotting

**Image 1.** ABI2 Antibody (N-term) western blot analysis in Jurkat cell line lysates (35 µg/lane). This demonstrates the ABI2 antibody detected the ABI2 protein (arrow).

Western Blotting

**Image 2.** ABI2 Antibody (N-term) western blot analysis in mouse heart tissue lysates (35 µg/lane). This demonstrates the ABI2 antibody detected the ABI2 protein (arrow).