

Datasheet for ABIN950225  
**anti-CLMP antibody (Middle Region)**[Go to Product page](#)

## 2 Images

## Overview

Quantity:	0.4 mL
Target:	CLMP
Binding Specificity:	AA 80-111, Middle Region
Reactivity:	Human
Host:	Rabbit
Clonality:	Polyclonal
Conjugate:	This CLMP antibody is un-conjugated
Application:	Western Blotting (WB), Enzyme Immunoassay (EIA)

## Product Details

Immunogen:	KLH conjugated synthetic peptide between 80-111 amino acids from the Central region of human ASAM
Isotype:	Ig Fraction
Specificity:	This antibody reacts to ACAM.
Cross-Reactivity (Details):	Species reactivity (tested):Human.
Purification:	Affinity chromatography on Protein A

## Target Details

Target:	CLMP
Alternative Name:	ACAM / ASAM ( <a href="#">CLMP Products</a> )

## Target Details

Background: The CTX (see VSIG2, MIM 606011) family of proteins, including ASAM, are type I transmembrane proteins within the Ig superfamily that localize to junctional complexes between endothelial and epithelial cells and may play a role in cell-cell adhesion (Raschperger et al., 2004 [PubMed 14573622]).[supplied by OMIM]Synonyms: Adipocyte adhesion molecule, CLMP

Gene ID: 79827

NCBI Accession: [NP\\_079045](#)

## Application Details

Application Notes: Optimal working dilution should be determined by the investigator.

Restrictions: For Research Use only

## Handling

Format: Liquid

Concentration: 0.25 mg/mL

Buffer: PBS containing 0.09 % (W/V) sodium azide as preservative

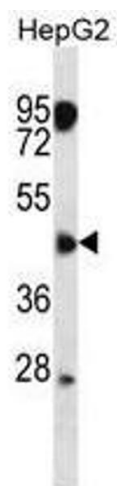
Preservative: Sodium azide

Precaution of Use: This product contains sodium azide: a POISONOUS AND HAZARDOUS SUBSTANCE which should be handled by trained staff only.

Handling Advice: Avoid repeated freezing and thawing.

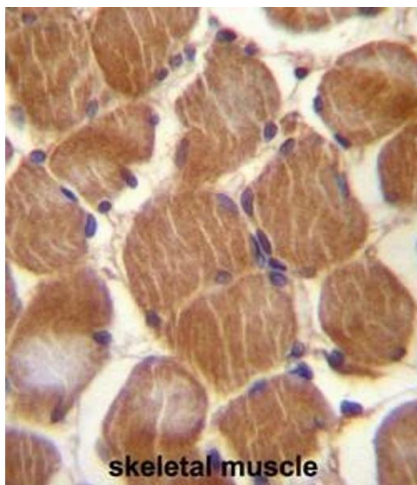
Storage: 4 °C/-20 °C

Storage Comment: Store the antibody undiluted at 2-8 °C for one month or (in aliquots) at -20 °C for longer.



#### Western Blotting

**Image 1.** ASAM Antibody (Center) western blot analysis in HepG2 cell line lysates (35µg/lane). This demonstrates the ASAM antibody detected the ASAM protein (arrow).



#### Immunohistochemistry (Paraffin-embedded Sections)

**Image 2.** ASAM Antibody (Center) immunohistochemistry analysis in formalin fixed and paraffin embedded human skeletal muscle followed by peroxidase conjugation of the secondary antibody and DAB staining. This data demonstrates the use of ASAM Antibody (Center) for immunohistochemistry. Clinical relevance has not been evaluated.