

Datasheet for ABIN950226
anti-ACAP1 antibody (N-Term)

3 Images

[Go to Product page](#)

Overview

Quantity:	0.4 mL
Target:	ACAP1
Binding Specificity:	AA 103-132, N-Term
Reactivity:	Human, Mouse
Host:	Rabbit
Clonality:	Polyclonal
Conjugate:	This ACAP1 antibody is un-conjugated
Application:	Western Blotting (WB), Enzyme Immunoassay (EIA)

Product Details

Immunogen:	KLH conjugated synthetic peptide between 103-132 amino acids from the N-terminal region of human ACAP1
Isotype:	Ig Fraction
Specificity:	This antibody reacts to ACAP1 / CENTB1.
Cross-Reactivity (Details):	Species reactivity (tested): Human and Mouse.
Purification:	Affinity chromatography on Protein A

Target Details

Target:	ACAP1
Alternative Name:	ACAP1 / CENTB1 (ACAP1 Products)

Target Details

Background:	Catalyzes the transfer of Gal to GlcNAc-based acceptors with a preference for the core3 O-linked glycan GlcNAc(beta1,3)GalNAc structure. Can use glycolipid LC3Cer as an efficient acceptor.Synonyms: ANK repeat and PH domain-containing protein 1, ARFGAP with coiled-coil, Centaurin beta 1, KIAA0050
-------------	--

Gene ID:	9744
----------	------

NCBI Accession:	NP_055531
-----------------	---------------------------

Application Details

Application Notes:	Optimal working dilution should be determined by the investigator.
--------------------	--

Restrictions:	For Research Use only
---------------	-----------------------

Handling

Format:	Liquid
---------	--------

Concentration:	0.25 mg/mL
----------------	------------

Buffer:	PBS containing 0.09 % (W/V) sodium azide as preservative
---------	--

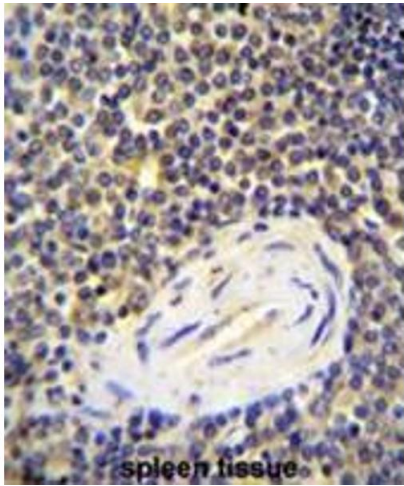
Preservative:	Sodium azide
---------------	--------------

Precaution of Use:	This product contains sodium azide: a POISONOUS AND HAZARDOUS SUBSTANCE which should be handled by trained staff only.
--------------------	--

Handling Advice:	Avoid repeated freezing and thawing.
------------------	--------------------------------------

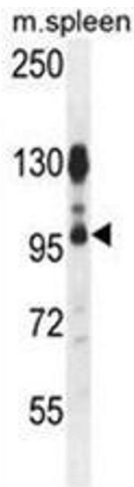
Storage:	4 °C/-20 °C
----------	-------------

Storage Comment:	Store the antibody undiluted at 2-8 °C for one month or (in aliquots) at -20 °C for longer.
------------------	---



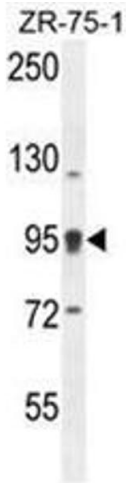
Immunohistochemistry (Paraffin-embedded Sections)

Image 1. ACAP1 Antibody (N-term) immunohistochemistry analysis in formalin fixed and paraffin embedded human spleen tissue followed by peroxidase conjugation of the secondary antibody and DAB staining. This data demonstrates the use of ACAP1 Antibody (N-term) for immunohistochemistry. Clinical relevance has not been evaluated.



Western Blotting

Image 2. ACAP1 Antibody (N-term) western blot analysis in mouse spleen tissue lysates (35 µg/lane). This demonstrates the ACAP1 antibody detected the ACAP1 protein (arrow).



Western Blotting

Image 3. ACAP1 Antibody (N-term) western blot analysis in ZR-75-1 cell line lysates (35ug/lane). This demonstrates the ACAP1 antibody detected the ACAP1 protein (arrow).