

Datasheet for ABIN950235

**anti-CHRND antibody (Middle Region, Subunit delta)**[Go to Product page](#)**2** Images

## Overview

Quantity:	0.4 mL
Target:	CHRND
Binding Specificity:	AA 175-204, Middle Region, Subunit delta
Reactivity:	Human
Host:	Rabbit
Clonality:	Polyclonal
Conjugate:	This CHRND antibody is un-conjugated
Application:	Western Blotting (WB), Flow Cytometry (FACS), Enzyme Immunoassay (EIA)

## Product Details

Immunogen:	KLH conjugated synthetic peptide between 175-204 amino acids from the Central region of human CHRND
Isotype:	Ig Fraction
Specificity:	This antibody reacts to CHRND.
Cross-Reactivity (Details):	Species reactivity (tested):Human.
Purification:	Affinity chromatography on Protein A

## Target Details

Target:	CHRND
Alternative Name:	Acetylcholine Receptor delta Subunit ( <a href="#">CHRND Products</a> )

## Target Details

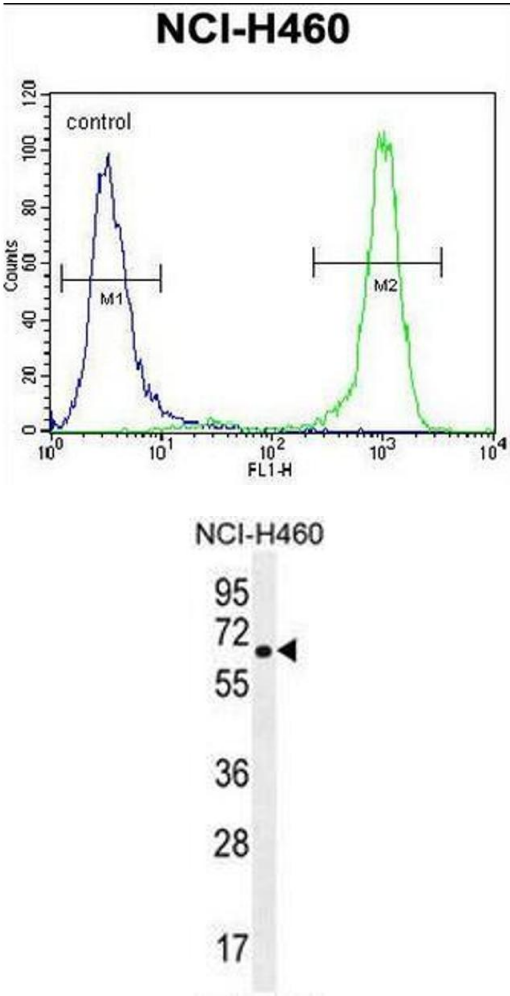
Background:	The acetylcholine receptor of muscle has 5 subunits of 4 different types: 2 alpha and 1 each of beta, gamma and delta subunits. After acetylcholine binding, the receptor undergoes an extensive conformation change that affects all subunits and leads to opening of an ion-conducting channel across the plasma membrane.Synonyms: ACHRD, CHRND
Molecular Weight:	58895 Da
Gene ID:	1144
NCBI Accession:	<a href="#">NP_000742</a>

## Application Details

Application Notes:	Optimal working dilution should be determined by the investigator.
Restrictions:	For Research Use only

## Handling

Format:	Liquid
Concentration:	0.25 mg/mL
Buffer:	PBS, 0.09 % (W/V) sodium azide
Preservative:	Sodium azide
Precaution of Use:	This product contains sodium azide: a POISONOUS AND HAZARDOUS SUBSTANCE which should be handled by trained staff only.
Handling Advice:	Avoid repeated freezing and thawing.
Storage:	4 °C/-20 °C
Storage Comment:	Store undiluted at 2-8 °C for one month or (in aliquots) at -20 °C for longer.



Flow Cytometry

**Image 1.** CHRND Antibody (Center) flow cytometric analysis of NCI-H460 cells (right histogram) compared to a negative control cell (left histogram).FITC-conjugated goat-anti-rabbit secondary antibodies were used for the analysis.

Western Blotting

**Image 2.** CHRND Antibody (Center) western blot analysis in NCI-H460 cell line lysates (35µg/lane).This demonstrates the CHRND antibody detected the CHRND protein (arrow).