



Datasheet for ABIN950245
anti-ACP1 antibody (N-Term)



[Go to Product page](#)

3 Images

Overview

Quantity:	0.4 mL
Target:	ACP1
Binding Specificity:	AA 40-69, N-Term
Reactivity:	Human
Host:	Rabbit
Clonality:	Polyclonal
Conjugate:	This ACP1 antibody is un-conjugated
Application:	Western Blotting (WB), Flow Cytometry (FACS), Immunohistochemistry (Paraffin-embedded Sections) (IHC (p)), Enzyme Immunoassay (EIA)

Product Details

Immunogen:	KLH conjugated synthetic peptide between 40~69 amino acids from the N-terminal region of human ACP1
Isotype:	Ig Fraction
Specificity:	This antibody reacts to ACP1 / LMW-PTPase.
Cross-Reactivity (Details):	Species reactivity (tested):Human.
Purification:	Affinity chromatography on Protein A

Target Details

Target:	ACP1
---------	------

Target Details

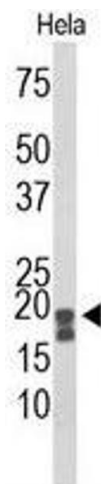
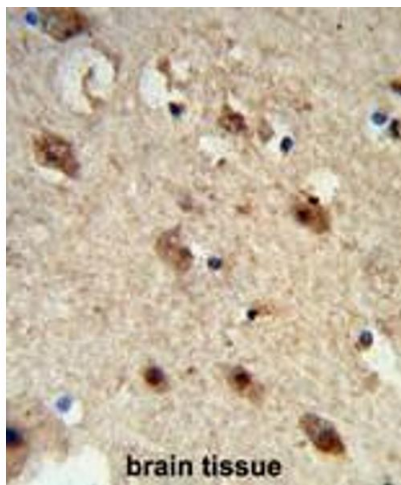
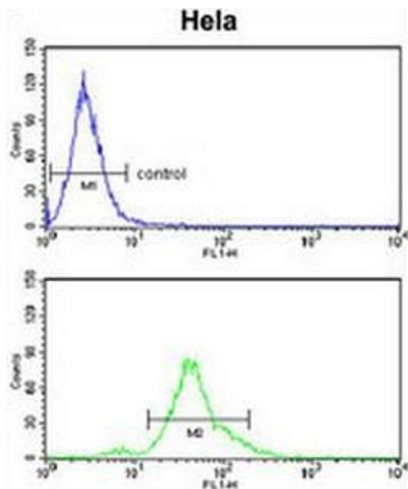
Alternative Name:	ACP1 / LMW-PTPase (ACP1 Products)
Background:	ACP1 belongs to the phosphotyrosine protein phosphatase family of proteins. It functions as an acid phosphatase and a protein tyrosine phosphatase by hydrolyzing protein tyrosine phosphate to protein tyrosine and orthophosphate. This enzyme also hydrolyzes orthophosphoric monoesters to alcohol and orthophosphate. This gene is genetically polymorphic, and three common alleles segregating at the corresponding locus give rise to six phenotypes. Each allele appears to encode at least two electrophoretically different isozymes, Bf and Bs, which are produced in allele-specific ratios. Synonyms: Adipocyte acid phosphatase, HAAP, Low molecular weight cytosolic acid phosphatase, Low molecular weight phosphotyrosine protein phosphatase, Red cell acid phosphatase 1
Gene ID:	52
NCBI Accession:	NP_004291

Application Details

Application Notes:	Optimal working dilution should be determined by the investigator.
Restrictions:	For Research Use only

Handling

Format:	Liquid
Concentration:	0.25 mg/mL
Buffer:	PBS containing 0.09 % (W/V) sodium azide as preservative
Preservative:	Sodium azide
Precaution of Use:	This product contains sodium azide: a POISONOUS AND HAZARDOUS SUBSTANCE which should be handled by trained staff only.
Handling Advice:	Avoid repeated freezing and thawing.
Storage:	4 °C/-20 °C
Storage Comment:	Store the antibody undiluted at 2-8 °C for one month or (in aliquots) at -20 °C for longer.



Flow Cytometry

Image 1. ACP1 Antibody (N-term) flow cytometry analysis of HeLa cells (bottom histogram) compared to a negative control cell (top histogram). FITC-conjugated goat-anti-rabbit secondary antibodies were used for the analysis.

Immunohistochemistry (Paraffin-embedded Sections)

Image 2. Formalin-fixed and paraffin-embedded human brain tissue reacted with ACP1 Antibody (N-term), which was peroxidase-conjugated to the secondary antibody, followed by DAB staining. This data demonstrates the use of this antibody for immunohistochemistry; clinical relevance has not been evaluated.

Western Blotting

Image 3. Western blot analysis of ACP1 Antibody (N-term) in HeLa cell line lysates (35 µg/lane). ACP1 (arrow) was detected using the purified Pab.