



[Go to Product page](#)

Datasheet for ABIN950266

## anti-ADAM19 antibody (Middle Region)

### 3 Images

#### Overview

Quantity:	0.4 mL
Target:	ADAM19 (Adam19)
Binding Specificity:	AA 215-245, Middle Region
Reactivity:	Human
Host:	Rabbit
Clonality:	Polyclonal
Conjugate:	This ADAM19 antibody is un-conjugated
Application:	Western Blotting (WB), Immunohistochemistry (Paraffin-embedded Sections) (IHC (p)), Flow Cytometry (FACS)

#### Product Details

Immunogen:	KLH conjugated synthetic peptide between 215~245 amino acids from the Central region of human ADAM19
Isotype:	Ig Fraction
Specificity:	This antibody reacts to ADAM19.
Cross-Reactivity (Details):	Species reactivity (tested):Human.
Purification:	Saturated Ammonium Sulfate (SAS) precipitation

#### Target Details

Target:	ADAM19 (Adam19)
---------	-----------------

## Target Details

---

Alternative Name: ADAM19 / MLTNB ([Adam19 Products](#))

---

Background: This gene encodes a member of the ADAM (a disintegrin and metalloprotease domain) family. Members of this family are membrane-anchored proteins structurally related to snake venom disintegrins, and have been implicated in a variety of biological processes involving cell-cell and cell-matrix interactions, including fertilization, muscle development, and neurogenesis. This member is a type I transmembrane protein and serves as a marker for dendritic cell differentiation. It has also been demonstrated to be an active metalloproteinase, which may be involved in normal physiological and pathological processes such as cells migration, cell adhesion, cell-cell and cell-matrix interactions, and signal transduction. Synonyms: Disintegrin and metalloproteinase domain-containing protein 19, FKSG34, Meltrin-beta, Metalloprotease and disintegrin dendritic antigen marker

---

Gene ID: 8728

---

NCBI Accession: [NP\\_150377](#)

---

## Application Details

---

Application Notes: Optimal working dilution should be determined by the investigator.

---

Restrictions: For Research Use only

---

## Handling

---

Format: Liquid

---

Concentration: 0.25 mg/mL

---

Buffer: PBS containing 0.09 % (W/V) Sodium Azide as preservative

---

Preservative: Sodium azide

---

Precaution of Use: This product contains sodium azide: a POISONOUS AND HAZARDOUS SUBSTANCE which should be handled by trained staff only.

---

Handling Advice: Avoid repeated freezing and thawing.

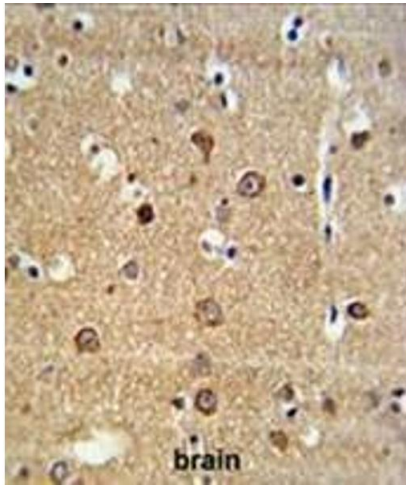
---

Storage: 4 °C/-20 °C

---

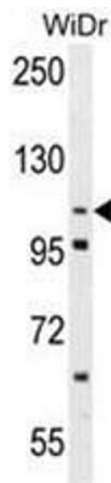
Storage Comment: Store the antibody undiluted at 2-8 °C for one month or (in aliquots) at -20 °C for longer.

---



### Immunohistochemistry (Paraffin-embedded Sections)

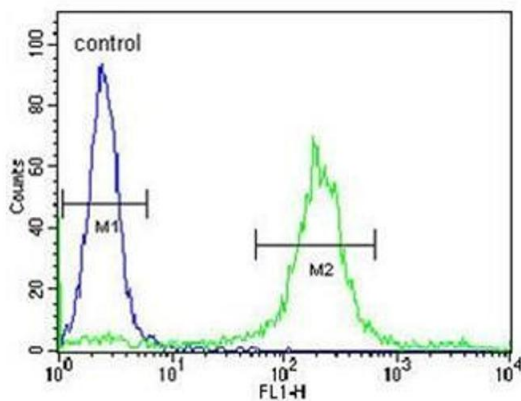
**Image 1.** ADAM19 Antibody (Center) IHC analysis in formalin fixed and paraffin embedded brain tissue followed by peroxidase conjugation of the secondary antibody and DAB staining. This data demonstrates the use of the ADAM19 Antibody (Center) for immunohistochemistry. Clinical relevance has not been evaluated.



### Western Blotting

**Image 2.** Western blot analysis of ADAM19 Antibody (Center) in WiDr cell line lysates (35 µg/lane). ADAM19 (arrow) was detected using the purified Pab.

### WiDr



### Flow Cytometry

**Image 3.** ADAM19 Antibody (Center) flow cytometric analysis of WiDr cells (right histogram) compared to a negative control cell (left histogram). FITC-conjugated goat-anti-rabbit secondary antibodies were used for the analysis.