

Datasheet for ABIN950270
anti-ADAMDEC1 antibody (N-Term)

3 Images

[Go to Product page](#)

Overview

Quantity:	0.4 mL
Target:	ADAMDEC1
Binding Specificity:	AA 47-76, N-Term
Reactivity:	Human
Host:	Rabbit
Clonality:	Polyclonal
Conjugate:	This ADAMDEC1 antibody is un-conjugated
Application:	Western Blotting (WB), Immunohistochemistry (Paraffin-embedded Sections) (IHC (p)), Enzyme Immunoassay (EIA)

Product Details

Immunogen:	KLH conjugated synthetic peptide between 47~76 amino acids from the N-terminal region of human ADAMDEC1
Isotype:	Ig Fraction
Specificity:	This antibody reacts to ADAMDEC1.
Cross-Reactivity (Details):	Species reactivity (tested):Human.
Purification:	Saturated Ammonium Sulfate (SAS) precipitation

Target Details

Target:	ADAMDEC1
---------	----------

Target Details

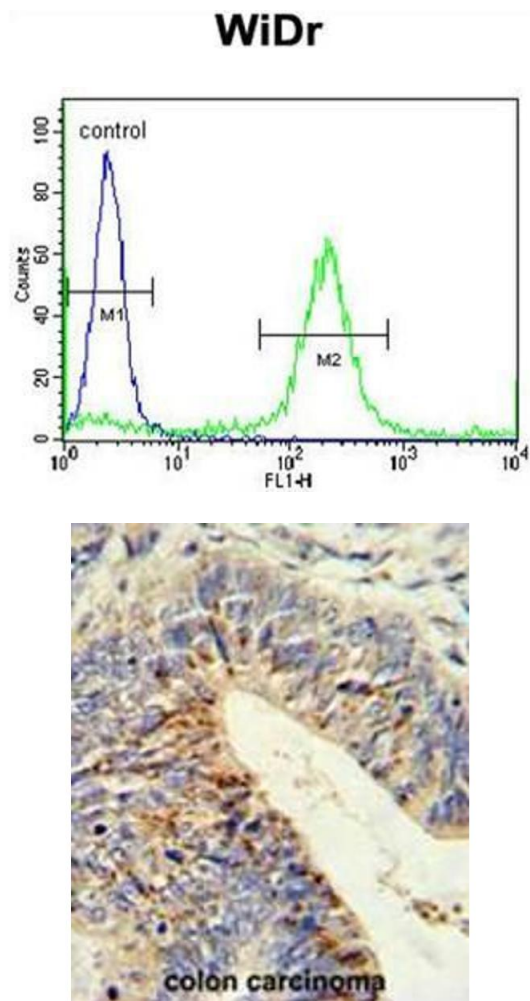
Alternative Name:	ADAMDEC1 (ADAMDEC1 Products)
Background:	Synonyms: A disintegrin and metalloproteinase domain-like protein decysin 1, ADAM-like protein decysin 1
Gene ID:	27299
NCBI Accession:	NP_001138744

Application Details

Application Notes:	Optimal working dilution should be determined by the investigator.
Restrictions:	For Research Use only

Handling

Format:	Liquid
Concentration:	0.25 mg/mL
Buffer:	PBS containing 0.09 % (W/V) sodium azide as preservative
Preservative:	Sodium azide
Precaution of Use:	This product contains sodium azide: a POISONOUS AND HAZARDOUS SUBSTANCE which should be handled by trained staff only.
Handling Advice:	Avoid repeated freezing and thawing.
Storage:	4 °C/-20 °C
Storage Comment:	Store the antibody undiluted at 2-8 °C for one month or (in aliquots) at -20 °C for longer.

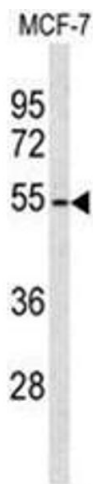


Flow Cytometry

Image 1. ADAMDEC1 Antibody (N-term) flow cytometric analysis of WiDr cells (right histogram) compared to a negative control cell (left histogram). FITC-conjugated goat-anti-rabbit secondary antibodies were used for the analysis.

Immunohistochemistry (Paraffin-embedded Sections)

Image 2. Formalin-fixed and paraffin-embedded human colon carcinoma reacted with ADAMDEC1 Antibody (N-term), which was peroxidase-conjugated to the secondary antibody, followed by DAB staining. This data demonstrates the use of this antibody for immunohistochemistry; clinical relevance has not been evaluated.



Western Blotting

Image 3. Western blot analysis of ADAMDEC1 Antibody (N-term) in MCF-7 cell line lysates (35 µg/lane). ADAMDEC1 (arrow) was detected using the purified Pab.