

Datasheet for ABIN950278

anti-ADCY2 antibody (Middle Region)[Go to Product page](#)**1** Image

Overview

Quantity:	0.4 mL
Target:	ADCY2
Binding Specificity:	AA 458-489, Middle Region
Reactivity:	Human
Host:	Rabbit
Clonality:	Polyclonal
Conjugate:	This ADCY2 antibody is un-conjugated
Application:	Western Blotting (WB), Enzyme Immunoassay (EIA)

Product Details

Immunogen:	KLH conjugated synthetic peptide between 458-489 amino acids from the Central region of human ADCY2
Isotype:	Ig Fraction
Specificity:	This antibody reacts to Adenylate cyclase type 2.
Cross-Reactivity (Details):	Species reactivity (tested):Human.
Purification:	Saturated Ammonium Sulfate (SAS) precipitation

Target Details

Target:	ADCY2
Alternative Name:	Adenylate Cyclase Type 2 (ADCY2 Products)

Target Details

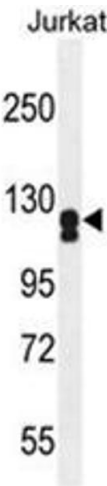
Background:	This gene encodes a member of the family of adenylate cyclases, which are membrane-associated enzymes that catalyze the formation of the secondary messenger cyclic adenosine monophosphate (cAMP). This enzyme is insensitive to Ca(2+)/calmodulin, and is stimulated by the G protein beta and gamma subunit complex.Synonyms: ADCY2, ATP pyrophosphate-lyase 2, Adenylate cyclase type II, Adenylyl cyclase 2, KIAA1060
Gene ID:	108
NCBI Accession:	NP_065433
Pathways:	EGFR Signaling Pathway , Neurotrophin Signaling Pathway , Thyroid Hormone Synthesis , cAMP Metabolic Process , Myometrial Relaxation and Contraction , G-protein mediated Events , Interaction of EGFR with phospholipase C-gamma

Application Details

Application Notes:	Optimal working dilution should be determined by the investigator.
Restrictions:	For Research Use only

Handling

Format:	Liquid
Concentration:	0.25 mg/mL
Buffer:	PBS containing 0.09 % (W/V) sodium azide as preservative
Preservative:	Sodium azide
Precaution of Use:	This product contains sodium azide: a POISONOUS AND HAZARDOUS SUBSTANCE which should be handled by trained staff only.
Handling Advice:	Avoid repeated freezing and thawing.
Storage:	4 °C/-20 °C
Storage Comment:	Store the antibody undiluted at 2-8 °C for one month or (in aliquots) at -20 °C for longer.



Western Blotting

Image 1. ADCY2 Antibody (Center) western blot analysis in Jurkat cell line lysates (35 µg/lane). This demonstrates the ADCY2 antibody detected the ADCY2 protein (arrow).