

Datasheet for ABIN950288  
**anti-ADPRHL2 antibody (N-Term)**



[Go to Product page](#)

1 Image

## Overview

Quantity:	0.4 mL
Target:	ADPRHL2
Binding Specificity:	AA 93-123, N-Term
Reactivity:	Human
Host:	Rabbit
Clonality:	Polyclonal
Conjugate:	This ADPRHL2 antibody is un-conjugated
Application:	Western Blotting (WB), Enzyme Immunoassay (EIA)

## Product Details

Immunogen:	KLH conjugated synthetic peptide between 93~123 amino acids from the N-terminal region of human ADPRHL2
Isotype:	Ig Fraction
Specificity:	This antibody reacts to ADPRHL2.
Cross-Reactivity (Details):	Species reactivity (tested):Human.
Purification:	Affinity chromatography on Protein A

## Target Details

Target:	ADPRHL2
Alternative Name:	ADPRHL2 / ARH3 ( <a href="#">ADPRHL2 Products</a> )

## Target Details

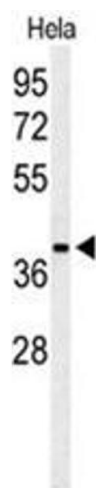
Background:	ADPRHL2 is a member of the ADP-ribosylglycohydrolase family. The enzyme catalyzes the removal of ADP-ribose from ADP-ribosylated proteins. This enzyme localizes to the mitochondria, in addition to the nucleus and cytoplasm.Synonyms: ADP-ribosylhydrolase 3, Poly(ADP-ribose) glycohydrolase ARH3, [Protein ADP-ribosylarginine] hydrolase-like protein 2
Gene ID:	54936
NCBI Accession:	<a href="#">NP_060295</a>

## Application Details

Application Notes:	Optimal working dilution should be determined by the investigator.
Restrictions:	For Research Use only

## Handling

Format:	Liquid
Concentration:	0.25 mg/mL
Buffer:	PBS containing 0.09 % (W/V) sodium azide as preservative
Preservative:	Sodium azide
Precaution of Use:	This product contains sodium azide: a POISONOUS AND HAZARDOUS SUBSTANCE which should be handled by trained staff only.
Handling Advice:	Avoid repeated freezing and thawing.
Storage:	4 °C/-20 °C
Storage Comment:	Store the antibody undiluted at 2-8 °C for one month or (in aliquots) at -20 °C for longer.



Western Blotting

**Image 1.** Western blot analysis of ADPRHL2 Antibody (N-term) in HeLa cell line lysates (35 µg/lane). ADPRHL2 (arrow) was detected using the purified Pab.