

Datasheet for ABIN950289

**anti-AEBP1 antibody (Middle Region)****2** Images[Go to Product page](#)

## Overview

Quantity:	0.4 mL
Target:	AEBP1
Binding Specificity:	AA 341-372, Middle Region
Reactivity:	Human, Mouse
Host:	Rabbit
Clonality:	Polyclonal
Conjugate:	This AEBP1 antibody is un-conjugated
Application:	Western Blotting (WB), Enzyme Immunoassay (EIA)

## Product Details

Immunogen:	KLH conjugated synthetic peptide between 341-372 amino acids from the Central region of human AEBP1
Isotype:	Ig Fraction
Specificity:	This antibody reacts to AEBP1.
Cross-Reactivity (Details):	Species reactivity (tested): Human and Mouse.
Purification:	Affinity chromatography on Protein A

## Target Details

Target:	AEBP1
Alternative Name:	AEBP1 / ACLP ( <a href="#">AEBP1 Products</a> )

## Target Details

**Background:** The adipocyte enhancer binding protein 1 is a transcriptional repressor with carboxypeptidase (CP) activity. This protein binds to a regulatory sequence, adipocyte enhancer 1 (AE-1), located in the proximal promoter region of the adipose P2 (aP2) gene, which encodes the adipocyte fatty-acid binding protein. It is characterized as a member of the regulatory B-like CP family. This protein seems to be activated by a novel mechanism, whereby the direct binding of DNA enhances its protease activity. Adipocyte-enhancer binding protein 1 may play a role in differentiated vascular smooth muscle cells. Synonyms: AE-binding protein 1, Adipocyte enhancer-binding protein 1, Aortic carboxypeptidase-like protein

**Gene ID:** 165

**NCBI Accession:** [NP\\_001120](#)

## Application Details

**Application Notes:** Optimal working dilution should be determined by the investigator.

**Restrictions:** For Research Use only

## Handling

**Format:** Liquid

**Concentration:** 0.25 mg/mL

**Buffer:** PBS containing 0.09 % (W/V) sodium azide as preservative

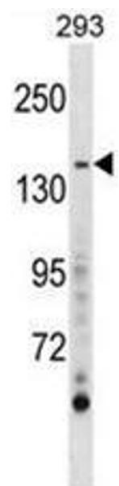
**Preservative:** Sodium azide

**Precaution of Use:** This product contains sodium azide: a POISONOUS AND HAZARDOUS SUBSTANCE which should be handled by trained staff only.

**Handling Advice:** Avoid repeated freezing and thawing.

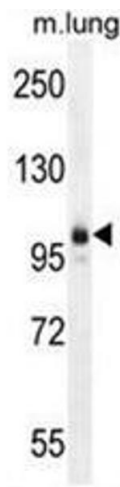
**Storage:** 4 °C/-20 °C

**Storage Comment:** Store the antibody undiluted at 2-8 °C for one month or (in aliquots) at -20 °C for longer.



Western Blotting

**Image 1.** AEBP1 Antibody (Center) western blot analysis in 293 cell line lysates (35 µg/lane). This demonstrates the AEBP1 antibody detected the AEBP1 protein (arrow).



Western Blotting

**Image 2.** AEBP1 Antibody (Center) western blot analysis in mouse lung tissue lysates (35µg/lane). This demonstrates the AEBP1 antibody detected the AEBP1 protein (arrow).