

Datasheet for ABIN950343
anti-ALDH1L2 antibody (C-Term)

2 Images



[Go to Product page](#)

Overview

Quantity:	0.4 mL
Target:	ALDH1L2
Binding Specificity:	AA 750-780, C-Term
Reactivity:	Human, Mouse
Host:	Rabbit
Clonality:	Polyclonal
Conjugate:	This ALDH1L2 antibody is un-conjugated
Application:	Western Blotting (WB), Enzyme Immunoassay (EIA)

Product Details

Immunogen:	KLH conjugated synthetic peptide between 750-780 amino acids from the C-terminal region of human ALDH1L2
Isotype:	Ig Fraction
Specificity:	This antibody reacts to ALDH1L2.
Cross-Reactivity (Details):	Species reactivity (tested):Mouse.
Purification:	Affinity chromatography on Protein A

Target Details

Target:	ALDH1L2
Alternative Name:	ALDH1L2 (ALDH1L2 Products)

Target Details

Background:	Synonyms: Aldehyde dehydrogenase family 1 member L2, Probable 10-formyltetrahydrofolate dehydrogenase ALDH1L2
Gene ID:	160428
NCBI Accession:	NP_001029345

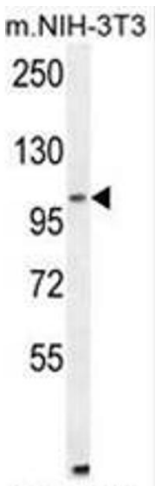
Application Details

Application Notes:	Optimal working dilution should be determined by the investigator.
Restrictions:	For Research Use only

Handling

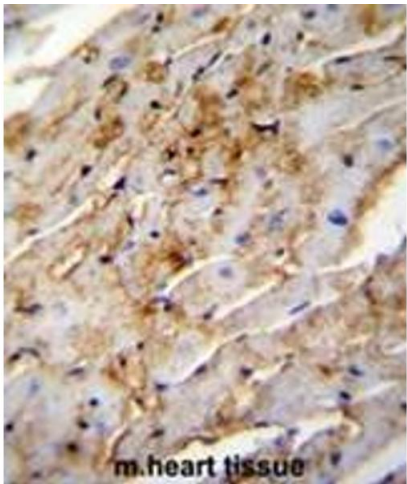
Format:	Liquid
Concentration:	0.25 mg/mL
Buffer:	PBS containing 0.09 % (W/V) sodium azide as preservative
Preservative:	Sodium azide
Precaution of Use:	This product contains sodium azide: a POISONOUS AND HAZARDOUS SUBSTANCE which should be handled by trained staff only.
Handling Advice:	Avoid repeated freezing and thawing.
Storage:	4 °C/-20 °C
Storage Comment:	Store the antibody undiluted at 2-8 °C for one month or (in aliquots) at -20 °C for longer.

Images



Western Blotting

Image 1. ALDH1L2 Antibody (C-term) western blot analysis in mouse NIH-3T3 cell line lysates (35 µg/lane). This demonstrates the ALDH1L2 antibody detected the ALDH1L2 protein (arrow).



Immunohistochemistry (Paraffin-embedded Sections)

Image 2. ALDH1L2 Antibody (C-term) immunohistochemistry analysis in formalin fixed and paraffin embedded mouse heart tissue followed by peroxidase conjugation of the secondary antibody and DAB staining. This data demonstrates the use of ALDH1L2 Antibody (C-term) for immunohistochemistry. Clinical relevance has not been evaluated.