



[Go to Product page](#)

Datasheet for ABIN950360
anti-TUBA1C antibody (C-Term)

2 Images

Overview

Quantity:	0.4 mL
Target:	TUBA1C
Binding Specificity:	AA 421-449, C-Term
Reactivity:	Human
Host:	Rabbit
Clonality:	Polyclonal
Conjugate:	This TUBA1C antibody is un-conjugated
Application:	Western Blotting (WB), Immunohistochemistry (Paraffin-embedded Sections) (IHC (p)), Enzyme Immunoassay (EIA)

Product Details

Immunogen:	KLH conjugated synthetic peptide between 421-449 amino acids from the C-terminal region of human TUBA1C
Isotype:	Ig Fraction
Specificity:	This antibody detects alpha Tubulin / TUBA1C / TUBA6 (C-term).
Cross-Reactivity (Details):	Species reactivity (tested):Human
Purification:	Protein A column followed by peptide affinity purification

Target Details

Target:	TUBA1C
---------	--------

Target Details

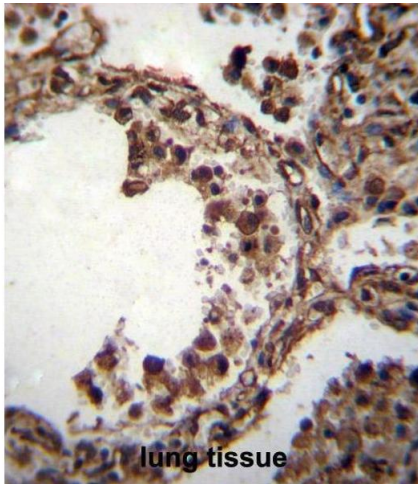
Abstract:	TUBA1C Products
Background:	Tubulin is the major constituent of microtubules. It binds two moles of GTP, one at an exchangeable site on the beta chain and one at a non-exchangeable site on the alpha-chain. Synonyms: Alpha-tubulin 6, Tubulin alpha-1C chain, Tubulin alpha-6 chain
Gene ID:	84790
NCBI Accession:	NP_116093
Pathways:	Microtubule Dynamics, M Phase

Application Details

Application Notes:	Optimal working dilution should be determined by the investigator.
Restrictions:	For Research Use only

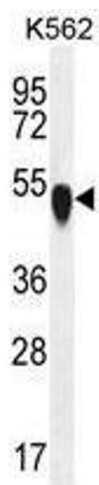
Handling

Format:	Liquid
Concentration:	0.25 mg/mL
Buffer:	PBS with 0.09 % (W/V) sodium azide
Preservative:	Sodium azide
Precaution of Use:	This product contains sodium azide: a POISONOUS AND HAZARDOUS SUBSTANCE which should be handled by trained staff only.
Handling Advice:	Avoid repeated freezing and thawing.
Storage:	4 °C/-20 °C
Storage Comment:	Store at 2 - 8 °C for up to six months or (in aliquots) at -20 °C for longer.



Immunohistochemistry (Paraffin-embedded Sections)

Image 1. TUBA1C Antibody (C-term) immunohistochemistry analysis in formalin fixed and paraffin embedded human lung tissue followed by peroxidase conjugation of the secondary antibody and DAB staining. This data demonstrates the use of TUBA1C Antibody (C-term) for immunohistochemistry. Clinical relevance has not been evaluated.



Western Blotting

Image 2. TUBA1C Antibody (C-term) western blot analysis in K562 cell line lysates (35 µg/lane). This demonstrates the TUBA1C antibody detected the TUBA1C protein (arrow).