

Datasheet for ABIN950374

**anti-Alpha-amylase 1 antibody (Middle Region)****3** Images[Go to Product page](#)

## Overview

Quantity:	0.4 mL
Target:	Alpha-amylase 1 (AMY1)
Binding Specificity:	AA 202-231, Middle Region
Reactivity:	Human
Host:	Rabbit
Clonality:	Polyclonal
Conjugate:	This Alpha-amylase 1 antibody is un-conjugated
Application:	Western Blotting (WB), Immunohistochemistry (Paraffin-embedded Sections) (IHC (p)), Enzyme Immunoassay (EIA), Flow Cytometry (FACS)

## Product Details

Immunogen:	KLH conjugated synthetic peptide between 202~231 amino acids from the Central region of human AMY1A
Isotype:	Ig Fraction
Specificity:	This antibody reacts to Alpha-amylase 1.
Cross-Reactivity (Details):	Species reactivity (tested):Human.
Purification:	Affinity chromatography on Protein A

## Target Details

Target:	Alpha-amylase 1 (AMY1)
---------	------------------------

## Target Details

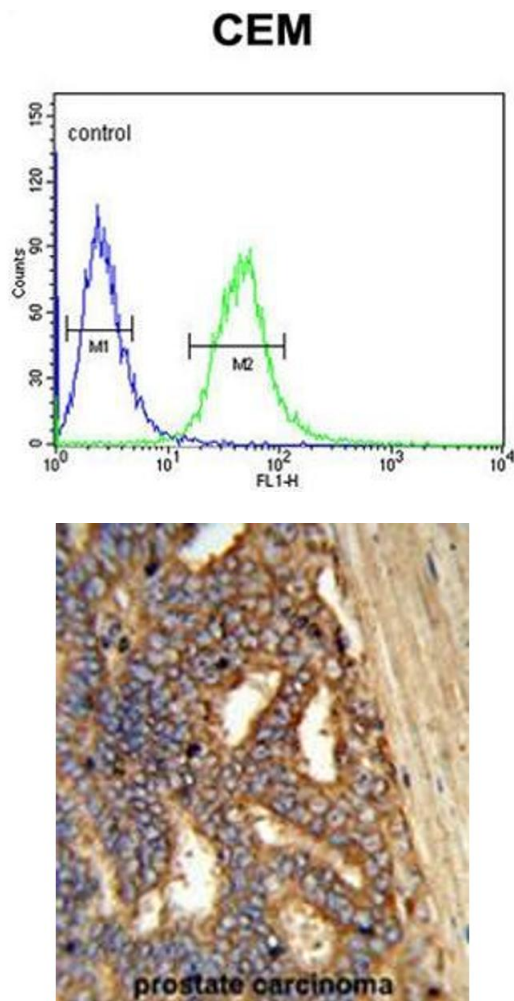
Alternative Name:	alpha-Amylase 1 ( <a href="#">AMY1 Products</a> )
Background:	Amylases are secreted proteins that hydrolyze 1,4-alpha-glucoside bonds in oligosaccharides and polysaccharides, and thus catalyze the first step in digestion of dietary starch and glycogen. The human genome has a cluster of several amylase genes that are expressed at high levels in either salivary gland or pancreas. It is an amylase isoenzyme produced by the salivary gland. Synonyms: 1, 4-alpha-D-glucan glucanohydrolase 1, AMY1, AMY1A, Salivary alpha-amylase
Gene ID:	276
NCBI Accession:	<a href="#">NP_001008219</a>

## Application Details

Application Notes:	Optimal working dilution should be determined by the investigator.
Restrictions:	For Research Use only

## Handling

Format:	Liquid
Concentration:	0.25 mg/mL
Buffer:	PBS containing 0.09 % (W/V) sodium azide as preservative
Preservative:	Sodium azide
Precaution of Use:	This product contains sodium azide: a POISONOUS AND HAZARDOUS SUBSTANCE which should be handled by trained staff only.
Handling Advice:	Avoid repeated freezing and thawing.
Storage:	4 °C/-20 °C
Storage Comment:	Store the antibody undiluted at 2-8 °C for one month or (in aliquots) at -20 °C for longer.

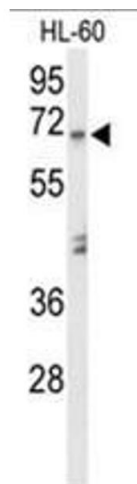


**Flow Cytometry**

**Image 1.** AMY1A Antibody (Center) flow cytometric analysis of CEM cells (right histogram) compared to a negative control cell (left histogram). FITC-conjugated goat-anti-rabbit secondary antibodies were used for the analysis.

**Immunohistochemistry (Paraffin-embedded Sections)**

**Image 2.** Formalin-fixed and paraffin-embedded human prostate carcinoma reacted with AMY1A Antibody (Center), which was peroxidase-conjugated to the secondary antibody, followed by DAB staining. This data demonstrates the use of this antibody for immunohistochemistry; clinical relevance has not been evaluated.



**Western Blotting**

**Image 3.** Western blot analysis of AMY1A Antibody (Center) in HL-60 cell line lysates (35µg/lane). AMY1A (arrow) was detected using the purified Pab.