

Datasheet for ABIN950375  
**anti-AMY2B antibody (N-Term)**[Go to Product page](#)

## 4 Images

## Overview

Quantity:	0.4 mL
Target:	AMY2B
Binding Specificity:	AA 77-105, N-Term
Reactivity:	Human
Host:	Rabbit
Clonality:	Polyclonal
Conjugate:	This AMY2B antibody is un-conjugated
Application:	Western Blotting (WB), Immunohistochemistry (Paraffin-embedded Sections) (IHC (p)), Enzyme Immunoassay (EIA)

## Product Details

Immunogen:	KLH conjugated synthetic peptide between 77-105 amino acids from the N-terminal region of human AMY2B
Isotype:	Ig Fraction
Specificity:	This antibody reacts to Alpha-amylase 2B.
Cross-Reactivity (Details):	Species reactivity (tested):Human.
Purification:	Affinity chromatography on Protein A

## Target Details

Target:	AMY2B
---------	-------

## Target Details

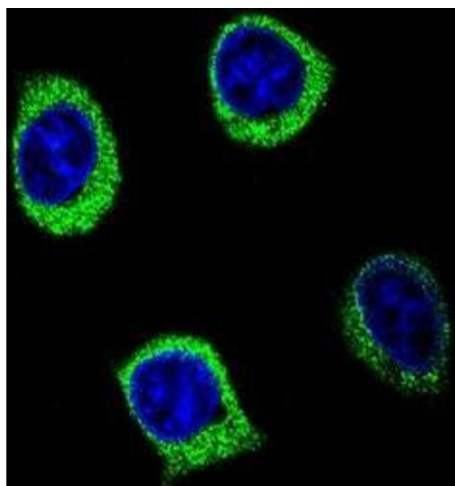
Alternative Name:	alpha-Amylase 2B ( <a href="#">AMY2B Products</a> )
Background:	Amylases are secreted proteins that hydrolyze 1,4-alpha-glucoside bonds in oligosaccharides and polysaccharides, and thus catalyze the first step in digestion of dietary starch and glycogen. The human genome has a cluster of several amylase genes that are expressed at high levels in either salivary gland or pancreas. This gene encodes an amylase isoenzyme produced by the pancreas. Synonyms: 1, 4-alpha-D-glucan glucanohydrolase 2B, AMY2B, Carcinoid alpha-amylase
Gene ID:	280
NCBI Accession:	<a href="#">NP_066188</a>

## Application Details

Application Notes:	Optimal working dilution should be determined by the investigator.
Restrictions:	For Research Use only

## Handling

Format:	Liquid
Concentration:	0.25 mg/mL
Buffer:	PBS containing 0.09 % (W/V) sodium azide as preservative
Preservative:	Sodium azide
Precaution of Use:	This product contains sodium azide: a POISONOUS AND HAZARDOUS SUBSTANCE which should be handled by trained staff only.
Handling Advice:	Avoid repeated freezing and thawing.
Storage:	4 °C/-20 °C
Storage Comment:	Store the antibody undiluted at 2-8 °C for one month or (in aliquots) at -20 °C for longer.



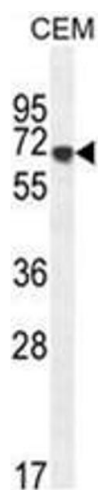
#### Immunofluorescence

**Image 1.** Confocal immunofluorescent analysis of AMY2B Antibody (N-term) (Cat#AP50167PU-N) with 293 cell followed by Alexa Fluor 488-conjugated goat anti-rabbit IgG (green). DAPI was used to stain the cell nuclear (blue).



#### Immunohistochemistry (Paraffin-embedded Sections)

**Image 2.** AMY2B antibody (N-term) immunohistochemistry analysis in formalin fixed and paraffin embedded human brain tissue followed by peroxidase conjugation of the secondary antibody and DAB staining. This data demonstrates the use of the AMY2B antibody (N-term) for immunohistochemistry. Clinical relevance has not been evaluated.



#### Western Blotting

**Image 3.** AMY2B Antibody (N-term) western blot analysis in CEM cell line lysates (35µg/lane). This demonstrates the AMY2B antibody detected the AMY2B protein (arrow).

Please check the [product details page](#) for more images. Overall 4 images are available for ABIN950375.