

Datasheet for ABIN950376  
**anti-Ensa antibody (Middle Region)**

## 3 Images

[Go to Product page](#)

## Overview

Quantity:	0.4 mL
Target:	Ensa (ENSA)
Binding Specificity:	AA 46-74, Middle Region
Reactivity:	Human, Mouse
Host:	Rabbit
Clonality:	Polyclonal
Conjugate:	This Ensa antibody is un-conjugated
Application:	Western Blotting (WB), Flow Cytometry (FACS), Enzyme Immunoassay (EIA)

## Product Details

Immunogen:	KLH conjugated synthetic peptide between 46-74 amino acids from the Central region of Human ENSA.
Isotype:	Ig Fraction
Specificity:	This antibody recognizes Human and Mouse Alpha-endosulfine (ENSA) (Center).
Purification:	Affinity Chromatography on Protein A

## Target Details

Target:	Ensa (ENSA)
Alternative Name:	alpha-Endosulfine (ENSA) ( <a href="#">ENSA Products</a> )
Background:	ENSA belongs to a highly conserved cAMP-regulated phosphoprotein (ARPP) family. This

## Target Details

protein was identified as an endogenous ligand for the sulfonylurea receptor, ABCC8/SUR1. ABCC8 is the regulatory subunit of the ATP-sensitive potassium (KATP) channel, which is located on the plasma membrane of pancreatic beta cells and plays a key role in the control of insulin release from pancreatic beta cells. This protein is thought to be an endogenous regulator of KATP channels. In vitro studies have demonstrated that this protein modulates insulin secretion through the interaction with KATP channel, and this gene has been proposed as a candidate gene for type 2 diabetes. Synonyms: ARPP-19e

Molecular Weight:	13389 Da
-------------------	----------

Gene ID:	2029
----------	------

NCBI Accession:	<a href="#">NP_004427</a>
-----------------	---------------------------

## Application Details

Application Notes:	Optimal working dilution should be determined by the investigator.
--------------------	--

Restrictions:	For Research Use only
---------------	-----------------------

## Handling

Format:	Liquid
---------	--------

Concentration:	0.25 mg/mL
----------------	------------

Buffer:	PBS containing 0.09 % (W/V) Sodium Azide as preservative
---------	--

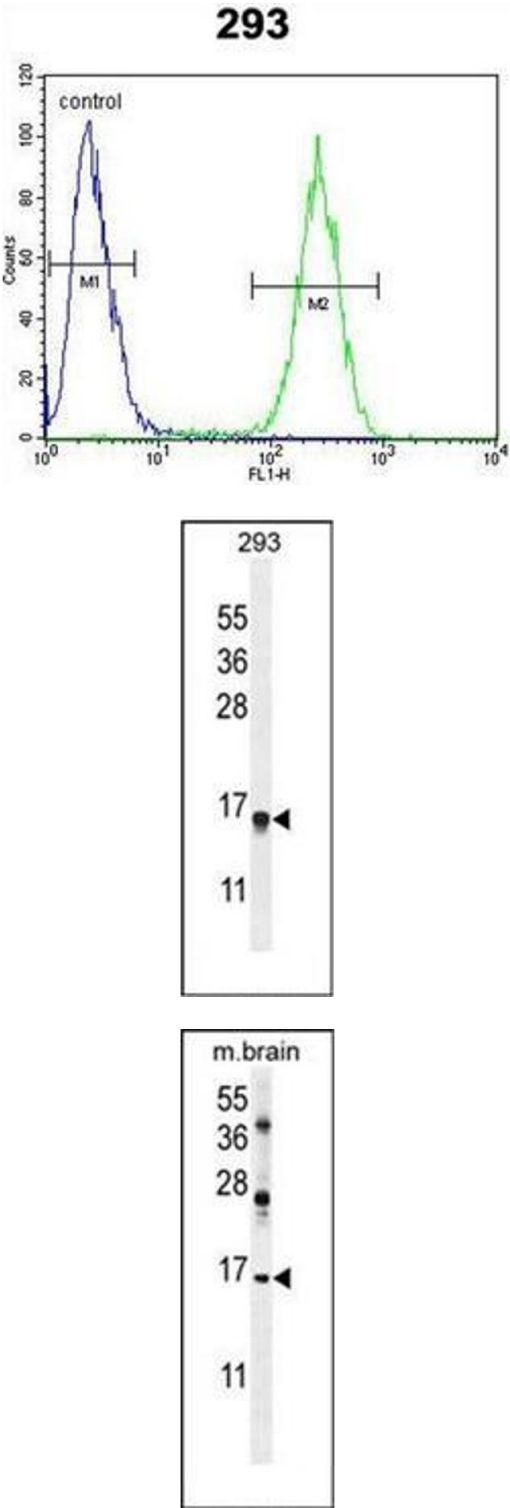
Preservative:	Sodium azide
---------------	--------------

Precaution of Use:	This product contains sodium azide: a POISONOUS AND HAZARDOUS SUBSTANCE which should be handled by trained staff only.
--------------------	--

Handling Advice:	Avoid repeated freezing and thawing.
------------------	--------------------------------------

Storage:	4 °C/-20 °C
----------	-------------

Storage Comment:	Store undiluted at 2-8 °C for one month or (in aliquots) at -20 °C for longer.
------------------	--



Flow Cytometry

**Image 1.** Flow cytometric analysis of 293 cells using ENSA Antibody (right histogram) compared to a negative control cell (left histogram). FITC-conjugated goat-anti-rabbit secondary antibodies were used for the analysis.

Western Blotting

**Image 2.** Western blot analysis of ENSA Antibody in 293 cell line lysates (35ug/lane). This demonstrates the ENSA antibody detected the ENSA protein (arrow).

Western Blotting

**Image 3.** Western blot analysis of ENSA Antibody in mouse brain tissue lysates (35ug/lane). This demonstrates the ENSA antibody detected the ENSA protein (arrow).