

Datasheet for ABIN950393
anti-CHIA antibody (N-Term)

2 Images

[Go to Product page](#)

Overview

Quantity:	0.4 mL
Target:	CHIA
Binding Specificity:	N-Term
Reactivity:	Human, Mouse
Host:	Rabbit
Clonality:	Polyclonal
Conjugate:	This CHIA antibody is un-conjugated
Application:	Western Blotting (WB), Flow Cytometry (FACS), Enzyme Immunoassay (EIA)

Product Details

Immunogen:	KLH conjugated synthetic peptide selected from the N-terminal region of human CHIA
Isotype:	Ig Fraction
Specificity:	This antibody reacts to CHIA.
Cross-Reactivity (Details):	Species reactivity (tested): Human and Mouse.
Purification:	Affinity chromatography on Protein A

Target Details

Target:	CHIA
Alternative Name:	AMCase (CHIA Products)
Background:	CHIA degrades chitin and chitotriose. May participate in the defense against nematodes and

Target Details

other pathogens. There are 3 named isoforms produced by alternative splicing. CHIA is induced via a T helper-2 (Th2)-specific, interleukin-13-mediated pathway in epithelial cells and macrophages. CHIA may be an important mediator of IL13-induced responses in Th2-dominated disorders such as asthma. CHIA hydrolysis N-acetyl-beta-D-glucosaminide 1,4-beta-linkages in chitin and chitodextrins. Synonyms: Acidic mammalian chitinase, CHIA, Lung-specific protein TSA1902, TSA1902

Molecular Weight: 52271 Da

Gene ID: 27159

NCBI Accession: [NP_068569](#)

Application Details

Application Notes: Optimal working dilution should be determined by the investigator.

Restrictions: For Research Use only

Handling

Format: Liquid

Concentration: 0.25 mg/mL

Buffer: PBS, 0.09 % (W/V) sodium azide

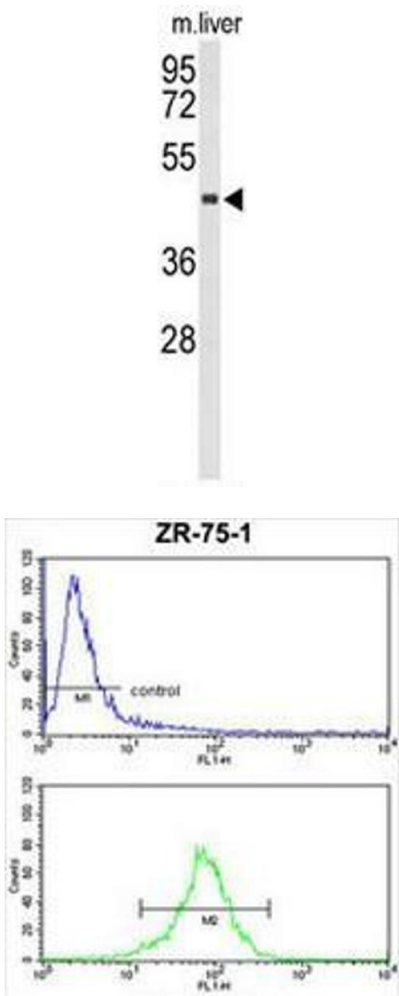
Preservative: Sodium azide

Precaution of Use: This product contains sodium azide: a POISONOUS AND HAZARDOUS SUBSTANCE which should be handled by trained staff only.

Handling Advice: Avoid repeated freezing and thawing.

Storage: 4 °C/-20 °C

Storage Comment: Store the antibody undiluted at 2-8 °C for one month or (in aliquots) at -20 °C for longer.



Western Blotting

Image 1. Western blot analysis of CHIA Antibody (N-term) in mouse liver tissue lysates (35µg/lane). CHIA (arrow) was detected using the purified Pab.

Flow Cytometry

Image 2. CHIA Antibody (N-term) FC analysis of ZR-75-1 cells (bottom histogram) compared to a negative control cell (top histogram). FITC-conjugated goat-anti-rabbit secondary antibodies were used for the analysis.