

Datasheet for ABIN950433

anti-Anoctamin 7 antibody (N-Term)**2** Images[Go to Product page](#)

Overview

Quantity:	0.4 mL
Target:	Anoctamin 7 (ANO7)
Binding Specificity:	AA 113-143, N-Term
Reactivity:	Human
Host:	Rabbit
Clonality:	Polyclonal
Conjugate:	This Anoctamin 7 antibody is un-conjugated
Application:	Western Blotting (WB), Flow Cytometry (FACS), Enzyme Immunoassay (EIA)

Product Details

Immunogen:	KLH conjugated synthetic peptide between 113~143 amino acids from the N-terminal region of human ANO7
Isotype:	Ig Fraction
Specificity:	This antibody reacts to ANO7.
Cross-Reactivity (Details):	Species reactivity (tested):Human.
Purification:	Affinity chromatography on Protein A

Target Details

Target:	Anoctamin 7 (ANO7)
Alternative Name:	Anoctamin-7 / ANO7 (ANO7 Products)

Target Details

Background: ANO7 may act as a calcium-activated chloride channel. This protein May play a role in cell-cell interactions.Synonyms: D-TMPP, Dresden transmembrane protein of the prostate, IPCA-5, NGEP, New gene expressed in prostate, PCANAP5, Prostate cancer-associated protein 5, TMEM16G, Transmembrane protein 16G

Gene ID: 50636

NCBI Accession: [NP_001001666](#)

Application Details

Application Notes: Optimal working dilution should be determined by the investigator.

Restrictions: For Research Use only

Handling

Format: Liquid

Concentration: 0.25 mg/mL

Buffer: PBS containing 0.09 % (W/V) sodium azide as preservative

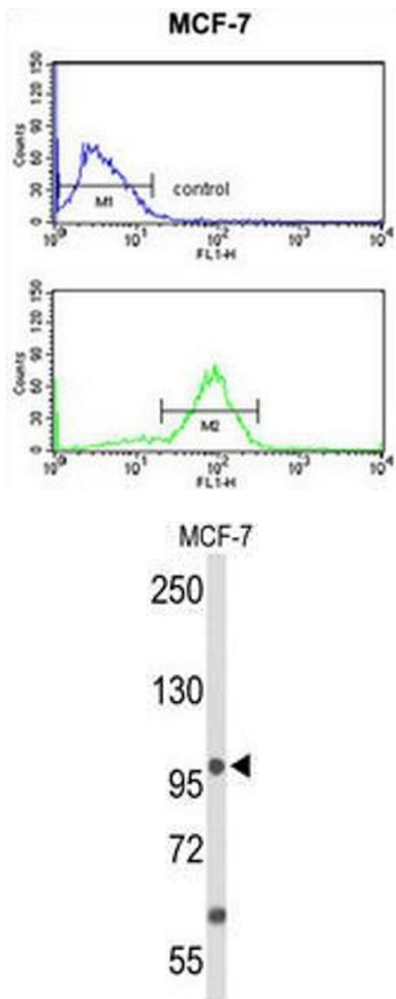
Preservative: Sodium azide

Precaution of Use: This product contains sodium azide: a POISONOUS AND HAZARDOUS SUBSTANCE which should be handled by trained staff only.

Handling Advice: Avoid repeated freezing and thawing.

Storage: 4 °C/-20 °C

Storage Comment: Store the antibody undiluted at 2-8 °C for one month or (in aliquots) at -20 °C for longer.



Flow Cytometry

Image 1. ANO7 Antibody (N-term) flow cytometry analysis of MCF-7 cells (bottom histogram) compared to a negative control cell (top histogram).FITC-conjugated goat-anti-rabbit secondary antibodies were used for the analysis.

Western Blotting

Image 2. Western blot analysis of ANO7 Antibody (N-term) in MCF-7 cell line lysates (35µg/lane). ANO7 (arrow) was detected using the purified Pab.