



Datasheet for ABIN950443
anti-AP1M1 antibody (Middle Region)



[Go to Product page](#)

2 Images

1 Publication

Overview

Quantity:	0.4 mL
Target:	AP1M1
Binding Specificity:	AA 206-235, Middle Region
Reactivity:	Human
Host:	Rabbit
Clonality:	Polyclonal
Conjugate:	This AP1M1 antibody is un-conjugated
Application:	Western Blotting (WB), Enzyme Immunoassay (EIA)

Product Details

Immunogen:	KLH conjugated synthetic peptide between 206-235 amino acids from the Central region of human AP1M1
Isotype:	Ig Fraction
Specificity:	This antibody reacts to AP1 complex subunit mu-1.
Cross-Reactivity (Details):	Species reactivity (tested):Human.
Purification:	Affinity chromatography on Protein A

Target Details

Target:	AP1M1
Alternative Name:	AP1 Complex Subunit mu-1 (AP1M1 Products)

Target Details

Background: The protein encoded by this gene is the medium chain of the trans-Golgi network clathrin-associated protein complex AP-1. The other components of this complex are beta-prime-adaptin, gamma-adaptin, and the small chain AP1S1. This complex is located at the Golgi vesicle and links clathrin to receptors in coated vesicles. These vesicles are involved in endocytosis and Golgi processing. Alternatively spliced transcript variants encoding distinct protein isoforms have been found for this gene. Synonyms: AP1M1, Adaptor protein complex AP-1 mu-1 subunit, Adaptor-related protein complex 1 mu-1 subunit, CLTNM, Clathrin assembly protein complex 1 medium chain 1, Clathrin coat assembly protein AP47, Clathrin coat-associated protein AP47, Golgi adaptor HA1/AP1 adaptin mu-1 subunit, Mu-adaptin 1, Mu1A-adaptin

Gene ID: 8907

NCBI Accession: [NP_115882](#)

Application Details

Application Notes: Optimal working dilution should be determined by the investigator.

Restrictions: For Research Use only

Handling

Format: Liquid

Concentration: 0.25 mg/mL

Buffer: PBS containing 0.09 % (W/V) sodium azide as preservative

Preservative: Sodium azide

Precaution of Use: This product contains sodium azide: a POISONOUS AND HAZARDOUS SUBSTANCE which should be handled by trained staff only.

Handling Advice: Avoid repeated freezing and thawing.

Storage: 4 °C/-20 °C

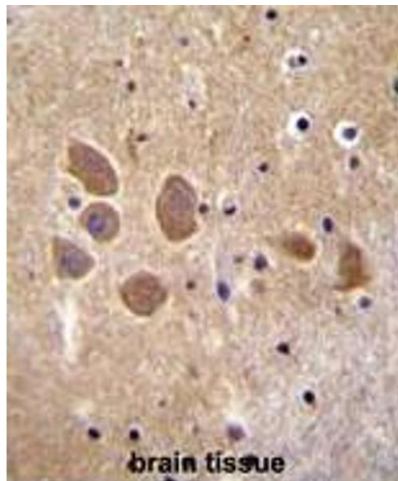
Storage Comment: Store the antibody undiluted at 2-8 °C for one month or (in aliquots) at -20 °C for longer.

Publications

Product cited in: Carnevale, Raparelli, Nocella, Bartimoccia, Novo, Severino, De Falco, Cammisotto, Pasquale, Crescioli, Scavalli, Riggio, Basili, Violi: "Gut-derived endotoxin stimulates factor VIII secretion

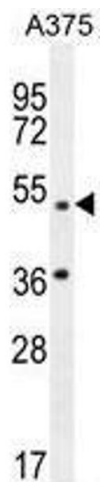
from endothelial cells. Implications for hypercoagulability in cirrhosis." in: **Journal of hepatology**, Vol. 67, Issue 5, pp. 950-956, (2018) ([PubMed](#)).

Images



Immunohistochemistry (Paraffin-embedded Sections)

Image 1. AP1M1 Antibody (Center) immunohistochemistry analysis in formalin fixed and paraffin embedded human brain tissue followed by peroxidase conjugation of the secondary antibody and DAB staining. This data demonstrates the use of AP1M1 Antibody (Center) for immunohistochemistry. Clinical relevance has not been evaluated.



Western Blotting

Image 2. AP1M1 Antibody (Center) western blot analysis in A375 cell line lysates (35µg/lane). This demonstrates the AP1M1 antibody detected the AP1M1 protein (arrow).