

Datasheet for ABIN950448

anti-AP3S1 antibody (N-Term)**3** Images[Go to Product page](#)

Overview

Quantity:	0.4 mL
Target:	AP3S1
Binding Specificity:	AA 2-31, N-Term
Reactivity:	Human, Mouse
Host:	Rabbit
Clonality:	Polyclonal
Conjugate:	This AP3S1 antibody is un-conjugated
Application:	Western Blotting (WB), Immunohistochemistry (Paraffin-embedded Sections) (IHC (p)), Enzyme Immunoassay (EIA)

Product Details

Immunogen:	KLH conjugated synthetic peptide between 2-31 amino acids from the N-terminal region of human AP3S1
Isotype:	Ig Fraction
Specificity:	This antibody reacts to AP3 complex subunit sigma-1.
Cross-Reactivity (Details):	Species reactivity (tested): Human and Mouse.
Purification:	Affinity chromatography on Protein A

Target Details

Target:	AP3S1
---------	-------

Target Details

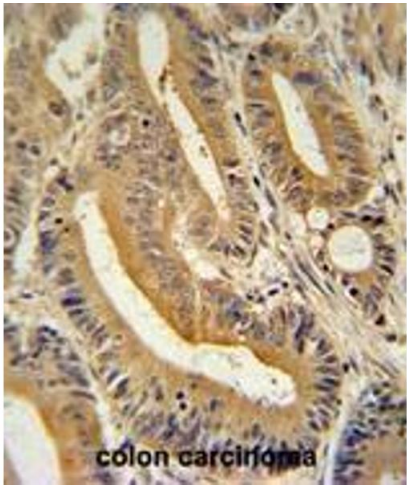
Alternative Name:	AP3 Complex Subunit sigma-1 (AP3S1 Products)
Background:	Part of the AP-3 complex, an adapter-related complex which is not clathrin-associated. The complex is associated with the Golgi region as well as more peripheral structures. It facilitates the budding of vesicles from the Golgi membrane and may be directly involved in trafficking to lysosomes.Synonyms: AP-3 complex sigma-3A subunit, AP3S1, Adapter-related protein complex 3 sigma-1 subunit, CLAPS3, Clathrin-associated assembly/adaptor protein, Sigma 3A Adaptin, Sigma-3A-adaptin, Sigma-adaptin 3a, small 3
Gene ID:	1176
NCBI Accession:	NP_001275

Application Details

Application Notes:	Optimal working dilution should be determined by the investigator.
Restrictions:	For Research Use only

Handling

Format:	Liquid
Concentration:	0.25 mg/mL
Buffer:	PBS containing 0.09 % (W/V) sodium azide as preservative
Preservative:	Sodium azide
Precaution of Use:	This product contains sodium azide: a POISONOUS AND HAZARDOUS SUBSTANCE which should be handled by trained staff only.
Handling Advice:	Avoid repeated freezing and thawing.
Storage:	4 °C/-20 °C
Storage Comment:	Store the antibody undiluted at 2-8 °C for one month or (in aliquots) at -20 °C for longer.



Immunohistochemistry (Paraffin-embedded Sections)

Image 1. AP3S1 antibody (N-term) immunohistochemistry analysis in formalin fixed and paraffin embedded human colon carcinoma followed by peroxidase conjugation of the secondary antibody and DAB staining. This data demonstrates the use of the AP3S1 antibody (N-term) for immunohistochemistry. Clinical relevance has not been evaluated.



Western Blotting

Image 2. AP3S1 Antibody (N-term) western blot analysis in A2058 cell line lysates (35µg/lane). This demonstrates the AP3S1 antibody detected the AP3S1 protein (arrow).

Western Blotting

Image 3. AP3S1 Antibody (N-term) western blot analysis in mouse Neuro-2a cell line lysates (35µg/lane). This demonstrates the AP3S1 antibody detected the AP3S1 protein (arrow).