



Datasheet for ABIN950480
anti-ARFIP1 antibody (Middle Region)



[Go to Product page](#)

2 Images

Overview

Quantity:	0.4 mL
Target:	ARFIP1
Binding Specificity:	AA 114-144, Middle Region
Reactivity:	Human
Host:	Rabbit
Clonality:	Polyclonal
Conjugate:	This ARFIP1 antibody is un-conjugated
Application:	Western Blotting (WB), Enzyme Immunoassay (EIA)

Product Details

Immunogen:	KLH conjugated synthetic peptide between 114-144 amino acids from the Central region of human ARFIP1
Isotype:	Ig Fraction
Specificity:	This antibody reacts to Arfaptin-1.
Cross-Reactivity (Details):	Species reactivity (tested):Human.
Purification:	Affinity chromatography on Protein A

Target Details

Target:	ARFIP1
Alternative Name:	Arfaptin-1 (ARFIP1 Products)

Target Details

Background:	ARFIP1 is a putative target protein of ADP-ribosylation factor.Synonyms: ADP-ribosylation factor-interacting protein 1, ARFIP1
Gene ID:	27236
NCBI Accession:	NP_001020764

Application Details

Application Notes:	Optimal working dilution should be determined by the investigator.
Restrictions:	For Research Use only

Handling

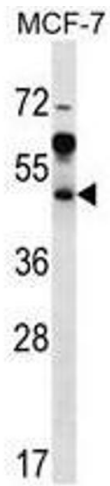
Format:	Liquid
Concentration:	0.25 mg/mL
Buffer:	PBS containing 0.09 % (W/V) sodium azide as preservative
Preservative:	Sodium azide
Precaution of Use:	This product contains sodium azide: a POISONOUS AND HAZARDOUS SUBSTANCE which should be handled by trained staff only.
Handling Advice:	Avoid repeated freezing and thawing.
Storage:	4 °C/-20 °C
Storage Comment:	Store the antibody undiluted at 2-8 °C for one month or (in aliquots) at -20 °C for longer.

Images



Immunohistochemistry (Paraffin-embedded Sections)

Image 1. ARFIP1 Antibody (Center) immunohistochemistry analysis in formalin fixed and paraffin embedded human placenta tissue followed by peroxidase conjugation of the secondary antibody and DAB staining. This data demonstrates the use of ARFIP1 Antibody (Center) for immunohistochemistry. Clinical relevance has not been evaluated.



Western Blotting

Image 2. ARFIP1 Antibody (Center) western blot analysis in MCF-7 cell line lysates (35µg/lane). This demonstrates the ARFIP1 antibody detected the ARFIP1 protein (arrow).