



[Go to Product page](#)

Datasheet for ABIN950486

anti-ARHGAP10 antibody (Middle Region)

3 Images

Overview

Quantity:	0.4 mL
Target:	ARHGAP10
Binding Specificity:	AA 240-267, Middle Region
Reactivity:	Human
Host:	Rabbit
Clonality:	Polyclonal
Application:	Western Blotting (WB), Immunohistochemistry (Paraffin-embedded Sections) (IHC (p)), Enzyme Immunoassay (EIA)

Product Details

Immunogen:	KLH conjugated synthetic peptide between 240-267 amino acids from the Central region of human ARHGAP10
Isotype:	Ig Fraction
Specificity:	This antibody reacts to ARHGAP10.
Cross-Reactivity (Details):	Species reactivity (tested):Human.
Purification:	Affinity chromatography on Protein A

Target Details

Target:	ARHGAP10
Alternative Name:	ARHGAP10 / GRAF2 (ARHGAP10 Products)

Target Details

Background: GTPase activator for the small GTPases RhoA and Cdc42 by converting them to an inactive GDP-bound state. Essential for PTKB2 regulation of cytoskeletal organization via Rho family GTPases. Inhibits PAK2 proteolytic fragment PAK-2p34 kinase activity and changes its localization from the nucleus to the perinuclear region. Stabilizes PAK-2p34 thereby increasing stimulation of cell death (By similarity).Synonyms: GTPase regulator associated with focal adhesion kinase 2, Graf-related protein 2, Rho GTPase-activating protein 10, Rho-type GTPase-activating protein 10

Gene ID: 79658

NCBI Accession: [NP_078881](#)

Application Details

Application Notes: Optimal working dilution should be determined by the investigator.

Restrictions: For Research Use only

Handling

Format: Liquid

Concentration: 0.25 mg/mL

Buffer: PBS containing 0.09 % (W/V) sodium azide as preservative

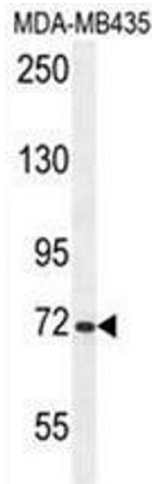
Preservative: Sodium azide

Precaution of Use: This product contains sodium azide: a POISONOUS AND HAZARDOUS SUBSTANCE which should be handled by trained staff only.

Handling Advice: Avoid repeated freezing and thawing.

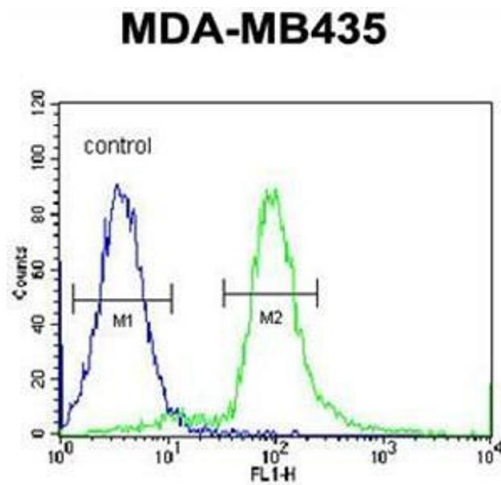
Storage: 4 °C/-20 °C

Storage Comment: Store the antibody undiluted at 2-8 °C for one month or (in aliquots) at -20 °C for longer.



Western Blotting

Image 1. ARHGAP10 Antibody (Center) western blot analysis in MDA-MB435 cell line lysates (35µg/lane). This demonstrates the ARHGAP10 antibody detected the ARHGAP10 protein (arrow).



Flow Cytometry

Image 2. ARHGAP10 Antibody (Center) flow cytometric analysis of MDA-MB435 cells (right histogram) compared to a negative control cell (left histogram). FITC-conjugated goat-anti-rabbit secondary antibodies were used for the analysis.



Immunohistochemistry (Paraffin-embedded Sections)

Image 3. ARHGAP10 antibody (Center) immunohistochemistry analysis in formalin fixed and paraffin embedded human skeletal muscle followed by peroxidase conjugation of the secondary antibody and DAB staining. This data demonstrates the use of the ARHGAP10 antibody (Center) for immunohistochemistry. Clinical relevance has not been evaluated.