

Datasheet for ABIN950501

anti-ARL17A antibody (Middle Region)[Go to Product page](#)**2** Images

Overview

| | |
|----------------------|--|
| Quantity: | 0.4 mL |
| Target: | ARL17A |
| Binding Specificity: | AA 109-139, Middle Region |
| Reactivity: | Human |
| Host: | Rabbit |
| Clonality: | Polyclonal |
| Conjugate: | This ARL17A antibody is un-conjugated |
| Application: | Western Blotting (WB), Immunohistochemistry (Paraffin-embedded Sections) (IHC (p)), Enzyme Immunoassay (EIA) |

Product Details

| | |
|-----------------------------|---|
| Immunogen: | KLH conjugated synthetic peptide between 109-139 amino acids from the Central region of human ARL17P1 |
| Isotype: | Ig Fraction |
| Specificity: | This antibody reacts to ARL17P1. |
| Cross-Reactivity (Details): | Species reactivity (tested):Human. |
| Purification: | Affinity chromatography on Protein A |

Target Details

| | |
|---------|--------|
| Target: | ARL17A |
|---------|--------|

Target Details

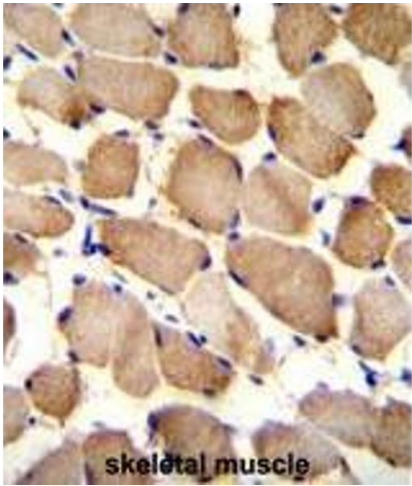
| | |
|-------------------|---|
| Alternative Name: | ARL17P1 (ARL17A Products) |
| Background: | GTP-binding protein that functions as an allosteric activator of the cholera toxin catalytic subunit, an ADP-ribosyltransferase. Involved in protein trafficking, may modulate vesicle budding and uncoating within the Golgi apparatus (By similarity).Synonyms: ADP-ribosylation factor-like protein 17, ARL17A |
| Gene ID: | 100506084 |
| NCBI Accession: | NP_001034172 |

Application Details

| | |
|--------------------|--|
| Application Notes: | Optimal working dilution should be determined by the investigator. |
| Restrictions: | For Research Use only |

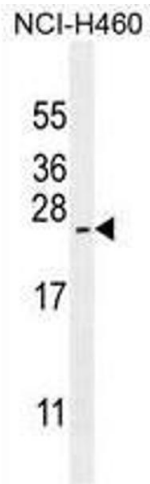
Handling

| | |
|--------------------|--|
| Format: | Liquid |
| Concentration: | 0.25 mg/mL |
| Buffer: | PBS containing 0.09 % (W/V) sodium azide as preservative |
| Preservative: | Sodium azide |
| Precaution of Use: | This product contains sodium azide: a POISONOUS AND HAZARDOUS SUBSTANCE which should be handled by trained staff only. |
| Handling Advice: | Avoid repeated freezing and thawing. |
| Storage: | 4 °C/-20 °C |
| Storage Comment: | Store the antibody undiluted at 2-8 °C for one month or (in aliquots) at -20 °C for longer. |



Immunohistochemistry (Paraffin-embedded Sections)

Image 1. ARL17P1 Antibody (Center) immunohistochemistry analysis in formalin fixed and paraffin embedded human skeletal muscle followed by peroxidase conjugation of the secondary antibody and DAB staining. This data demonstrates the use of ARL17P1 Antibody (Center) for immunohistochemistry. Clinical relevance has not been evaluated.



Western Blotting

Image 2. ARL17P1 Antibody (Center) western blot analysis in NCI-H460 cell line lysates (35µg/lane). This demonstrates the ARL17P1 antibody detected the ARL17P1 protein (arrow).