

Datasheet for ABIN950502
anti-ARL2 antibody (Middle Region)

2 Images

[Go to Product page](#)

Overview

Quantity:	0.4 mL
Target:	ARL2
Binding Specificity:	AA 53-82, Middle Region
Reactivity:	Human
Host:	Rabbit
Clonality:	Polyclonal
Conjugate:	This ARL2 antibody is un-conjugated
Application:	Western Blotting (WB), Enzyme Immunoassay (EIA)

Product Details

Immunogen:	KLH conjugated synthetic peptide between 53-82 amino acids from the Central region of human ARL2.
Isotype:	Ig Fraction
Specificity:	This antibody recognizes Human ARL2 (Center).
Cross-Reactivity (Details):	Species reactivity (tested):Human.
Purification:	Protein A column, followed by peptide affinity purification

Target Details

Target:	ARL2
Alternative Name:	ARL2 (ARL2 Products)

Target Details

Background: This gene encodes a small GTP-binding protein of the RAS superfamily which functions as an ADP-ribosylation factor (ARF). The encoded protein is one of a functionally distinct group of ARF-like genes. Synonyms: ADP-ribosylation factor-like protein 2

Gene ID: 402

NCBI Accession: [NP_001186674](#)

Pathways: [Cell-Cell Junction Organization](#), [Maintenance of Protein Location](#)

Application Details

Application Notes: Optimal working dilution should be determined by the investigator.

Restrictions: For Research Use only

Handling

Format: Liquid

Concentration: 0.25 mg/mL

Buffer: PBS containing 0.09 % (W/V) Sodium Azide as preservative

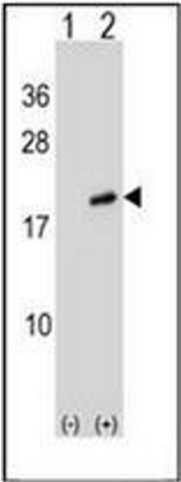
Preservative: Sodium azide

Precaution of Use: This product contains sodium azide: a POISONOUS AND HAZARDOUS SUBSTANCE which should be handled by trained staff only.

Handling Advice: Avoid repeated freezing and thawing.

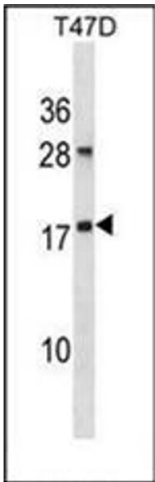
Storage: 4 °C/-20 °C

Storage Comment: Store undiluted at 2-8 °C for one month or (in aliquots) at -20 °C for longer.



Western Blotting

Image 1. Western blot analysis of ARL2 (arrow) using ARL2 Antibody (Center) Cat.-No AP50244PU-N. 293 cell lysates (2 ug/lane) either nontransfected (Lane 1) or transiently transfected (Lane 2) with the ARL2 gene.



Western Blotting

Image 2. Western blot analysis of ARL2 Antibody (Center) Cat.-No AP50244PU-N in T47D cell line lysates (35µg/lane). This demonstrates the ARL2 antibody detected the ARL2 protein (arrow).