

Datasheet for ABIN950503  
**anti-ARL5B antibody (C-Term)**

## 3 Images

[Go to Product page](#)

## Overview

Quantity:	0.4 mL
Target:	ARL5B
Binding Specificity:	AA 129-161, C-Term
Reactivity:	Human
Host:	Rabbit
Clonality:	Polyclonal
Conjugate:	This ARL5B antibody is un-conjugated
Application:	Western Blotting (WB), Flow Cytometry (FACS), Immunohistochemistry (Paraffin-embedded Sections) (IHC (p)), Enzyme Immunoassay (EIA)

## Product Details

Immunogen:	KLH conjugated synthetic peptide between 129-161 amino acids from the C-terminal region of human ARL8
Isotype:	Ig Fraction
Specificity:	This antibody reacts to ARL5B.
Cross-Reactivity (Details):	Species reactivity (tested):Human.
Purification:	Affinity chromatography on Protein A

## Target Details

Target:	ARL5B
---------	-------

## Target Details

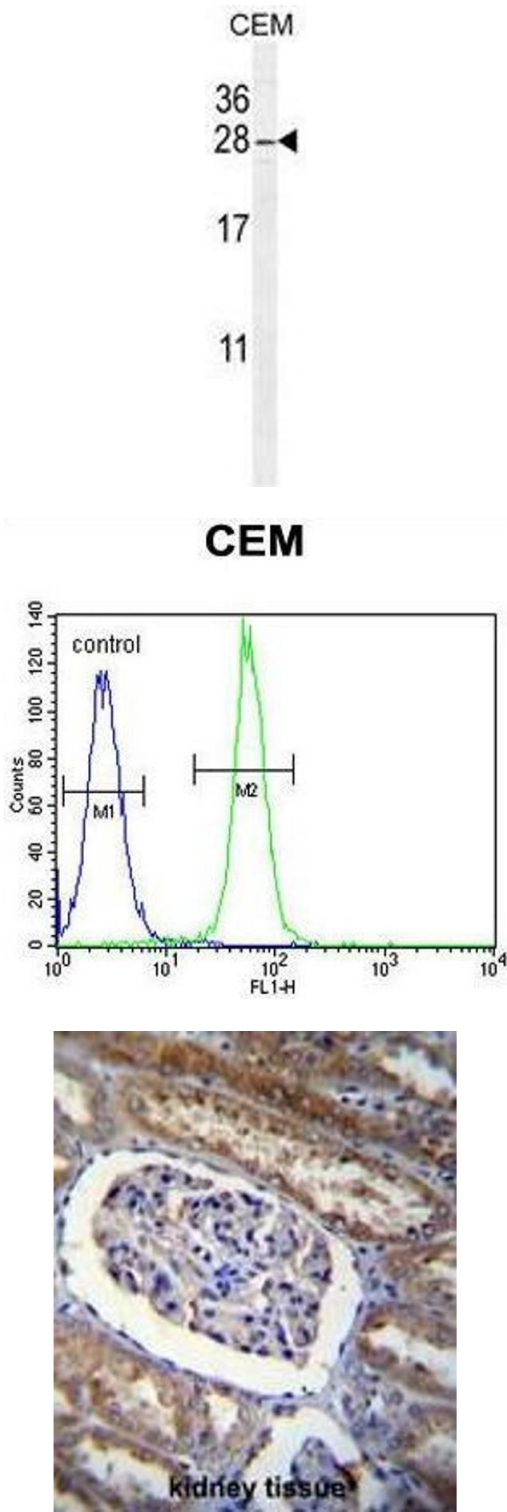
Alternative Name:	ARL5B / ARL8 ( <a href="#">ARL5B Products</a> )
Background:	ARL5B (ARL8) belongs to a family of proteins that are structurally similar to ADP-ribosylation factors (ARFs, see MIM 103180). ARLs and ARFs are part of the RAS superfamily of regulatory GTPases.Synonyms: ADP-ribosylation factor-like protein 5B, ADP-ribosylation factor-like protein 8
Gene ID:	221079
NCBI Accession:	<a href="#">NP_848930</a>

## Application Details

Application Notes:	Optimal working dilution should be determined by the investigator.
Restrictions:	For Research Use only

## Handling

Format:	Liquid
Concentration:	0.25 mg/mL
Buffer:	PBS containing 0.09 % (W/V) sodium azide as preservative
Preservative:	Sodium azide
Precaution of Use:	This product contains sodium azide: a POISONOUS AND HAZARDOUS SUBSTANCE which should be handled by trained staff only.
Handling Advice:	Avoid repeated freezing and thawing.
Storage:	4 °C/-20 °C
Storage Comment:	Store the antibody undiluted at 2-8 °C for one month or (in aliquots) at -20 °C for longer.



Western Blotting

**Image 1.** ARL8 Antibody (C-term) western blot analysis in CEM cell line lysates (35µg/lane).This demonstrates the ARL8 antibody detected the ARL8 protein (arrow).

Flow Cytometry

**Image 2.** ARL8 Antibody (C-term) flow cytometric analysis of CEM cells (right histogram) compared to a negative control cell (left histogram).FITC-conjugated goat-anti-rabbit secondary antibodies were used for the analysis.

Immunohistochemistry (Paraffin-embedded Sections)

**Image 3.** ARL8 Antibody (C-term) immunohistochemistry analysis in formalin fixed and paraffin embedded human kidney tissue followed by peroxidase conjugation of the secondary antibody and DAB staining.This data demonstrates the use of ARL8 Antibody (C-term) for immunohistochemistry. Clinical relevance has not been evaluated.