

Datasheet for ABIN950504

anti-ARL5C antibody (N-Term)[Go to Product page](#)**1** Image

Overview

Quantity:	0.4 mL
Target:	ARL5C
Binding Specificity:	AA 41-69, N-Term
Reactivity:	Mouse, Human
Host:	Rabbit
Clonality:	Polyclonal
Conjugate:	This ARL5C antibody is un-conjugated
Application:	Western Blotting (WB), Enzyme Immunoassay (EIA)

Product Details

Immunogen:	KLH conjugated synthetic peptide between 41-69 amino acids from the N-terminal region of human ARL5C
Isotype:	Ig Fraction
Specificity:	This antibody reacts to ARL5C.
Cross-Reactivity (Details):	Species reactivity (tested):Mouse.
Purification:	Affinity chromatography on Protein A

Target Details

Target:	ARL5C
Alternative Name:	ARL5C (ARL5C Products)

Target Details

Background:	Synonyms: ARL12, Putative ADP-ribosylation factor-like protein 5C
Gene ID:	390790
NCBI Accession:	NP_001137440

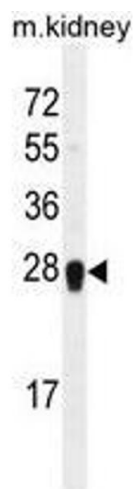
Application Details

Application Notes:	Optimal working dilution should be determined by the investigator.
Restrictions:	For Research Use only

Handling

Format:	Liquid
Concentration:	0.25 mg/mL
Buffer:	PBS containing 0.09 % (W/V) sodium azide as preservative
Preservative:	Sodium azide
Precaution of Use:	This product contains sodium azide: a POISONOUS AND HAZARDOUS SUBSTANCE which should be handled by trained staff only.
Handling Advice:	Avoid repeated freezing and thawing.
Storage:	4 °C/-20 °C
Storage Comment:	Store the antibody undiluted at 2-8 °C for one month or (in aliquots) at -20 °C for longer.

Images



Western Blotting

Image 1. ARL5C Antibody (N-term) western blot analysis in mouse kidney tissue lysates (35µg/lane). This demonstrates the ARL5C antibody detected the ARL5C protein (arrow).