

Datasheet for ABIN950507  
**anti-ARL8A antibody (Middle Region)**[Go to Product page](#)

## 4 Images

## Overview

Quantity:	0.4 mL
Target:	ARL8A
Binding Specificity:	AA 123-150, Middle Region
Reactivity:	Human, Mouse
Host:	Rabbit
Clonality:	Polyclonal
Conjugate:	This ARL8A antibody is un-conjugated
Application:	Western Blotting (WB), Flow Cytometry (FACS), Immunohistochemistry (Paraffin-embedded Sections) (IHC (p)), Enzyme Immunoassay (EIA)

## Product Details

Immunogen:	KLH conjugated synthetic peptide between 123-150 amino acids from the Central region of human ARL8A
Isotype:	Ig Fraction
Specificity:	This antibody reacts to ARL8A.
Cross-Reactivity (Details):	Species reactivity (tested): Human and Mouse.
Purification:	Affinity chromatography on Protein A

## Target Details

Target:	ARL8A
---------	-------

## Target Details

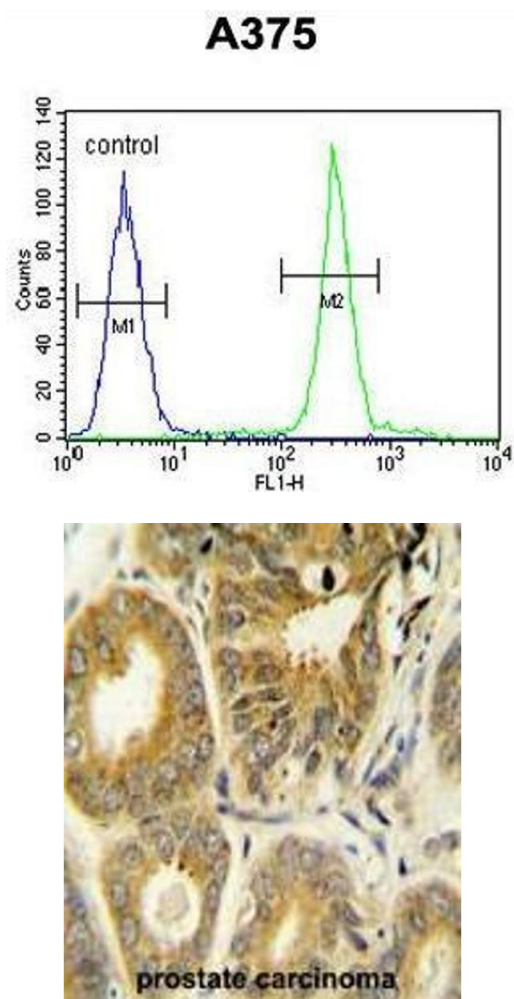
Alternative Name:	ARL8A / ARL10B ( <a href="#">ARL8A Products</a> )
Background:	Synonyms: ADP-ribosylation factor-like protein 10B, ADP-ribosylation factor-like protein 8A, GIE2, Novel small G protein indispensable for equal chromosome segregation 2
Gene ID:	127829
NCBI Accession:	<a href="#">NP_620150</a>

## Application Details

Application Notes:	Optimal working dilution should be determined by the investigator.
Restrictions:	For Research Use only

## Handling

Format:	Liquid
Concentration:	0.25 mg/mL
Buffer:	PBS containing 0.09 % (W/V) sodium azide as preservative
Preservative:	Sodium azide
Precaution of Use:	This product contains sodium azide: a POISONOUS AND HAZARDOUS SUBSTANCE which should be handled by trained staff only.
Handling Advice:	Avoid repeated freezing and thawing.
Storage:	4 °C/-20 °C
Storage Comment:	Store the antibody undiluted at 2-8 °C for one month or (in aliquots) at -20 °C for longer.



### Flow Cytometry

**Image 1.** ARL8A Antibody (Center) flow cytometric analysis of A375 cells (right histogram) compared to a negative control cell (left histogram). FITC-conjugated goat-anti-rabbit secondary antibodies were used for the analysis.

### Immunohistochemistry (Paraffin-embedded Sections)

**Image 2.** ARL8A Antibody (Center) immunohistochemistry analysis in formalin fixed and paraffin embedded human prostate carcinoma followed by peroxidase conjugation of the secondary antibody and DAB staining. This data demonstrates the use of the ARL8A Antibody (Center) for immunohistochemistry. Clinical relevance has not been evaluated.



### Western Blotting

**Image 3.** ARL8A Antibody (Center) western blot analysis in A375 cell line lysates (35µg/lane). This demonstrates the ARL8A antibody detected the ARL8A protein (arrow).

Please check the [product details page](#) for more images. Overall 4 images are available for ABIN950507.