

Datasheet for ABIN950526

anti-Arylsulfatase D antibody (C-Term)[Go to Product page](#)**1** Image

Overview

Quantity:	0.4 mL
Target:	Arylsulfatase D (ARSD)
Binding Specificity:	AA 501-532, C-Term
Reactivity:	Human
Host:	Rabbit
Clonality:	Polyclonal
Conjugate:	This Arylsulfatase D antibody is un-conjugated
Application:	Western Blotting (WB), Enzyme Immunoassay (EIA)

Product Details

Immunogen:	KLH conjugated synthetic peptide between 501-532 amino acids from the C-terminal region of human ARSD
Isotype:	Ig Fraction
Specificity:	This antibody reacts to Arylsulfatase D.
Cross-Reactivity (Details):	Species reactivity (tested):Human.
Purification:	Affinity chromatography on Protein A

Target Details

Target:	Arylsulfatase D (ARSD)
Alternative Name:	Arylsulfatase D (ARSD Products)

Target Details

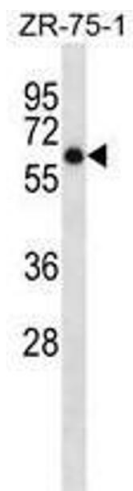
Background:	The protein encoded by this gene is a member of the sulfatase family. Sulfatases are essential for the correct composition of bone and cartilage matrix. This encoded protein is postrtranslationally glycosylated and localized to the lysosome. Two transcript variants encoding different isoforms have been found for this gene.Synonyms: ARSD, ASD
Gene ID:	414
NCBI Accession:	NP_001660

Application Details

Application Notes:	Optimal working dilution should be determined by the investigator.
Restrictions:	For Research Use only

Handling

Format:	Liquid
Concentration:	0.25 mg/mL
Buffer:	PBS containing 0.09 % (W/V) sodium azide as preservative
Preservative:	Sodium azide
Precaution of Use:	This product contains sodium azide: a POISONOUS AND HAZARDOUS SUBSTANCE which should be handled by trained staff only.
Handling Advice:	Avoid repeated freezing and thawing.
Storage:	4 °C/-20 °C
Storage Comment:	Store the antibody undiluted at 2-8 °C for one month or (in aliquots) at -20 °C for longer.



Western Blotting

Image 1. ARSD Antibody (C-term) western blot analysis in ZR-75-1 cell line lysates (35µg/lane). This demonstrates the ARSD antibody detected the ARSD protein (arrow).