

Datasheet for ABIN950543

anti-ASXL1 antibody (AA 521-549)[Go to Product page](#)**4** Images

Overview

| | |
|----------------------|---|
| Quantity: | 0.4 mL |
| Target: | ASXL1 |
| Binding Specificity: | AA 521-549 |
| Reactivity: | Human, Mouse |
| Host: | Rabbit |
| Clonality: | Polyclonal |
| Conjugate: | This ASXL1 antibody is un-conjugated |
| Application: | Western Blotting (WB), Flow Cytometry (FACS), Immunofluorescence (IF), Immunohistochemistry (Paraffin-embedded Sections) (IHC (p)), Enzyme Immunoassay (EIA) |

Product Details

| | |
|-----------------------------|---|
| Immunogen: | KLH conjugated synthetic peptide between 521-549 amino acids from the Central region of human ASXL. |
| Isotype: | Ig Fraction |
| Specificity: | This antibody detects ASXL1 at Center. |
| Cross-Reactivity (Details): | Species reactivity (tested):Mouse. |
| Purification: | Affinity Chromatography on Protein A |

Target Details

| | |
|---------|-------|
| Target: | ASXL1 |
|---------|-------|

Target Details

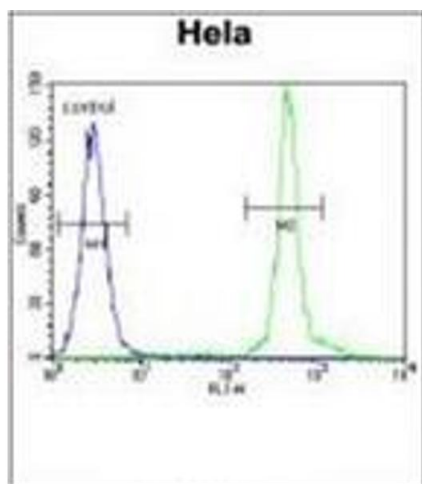
| | |
|-------------------|---|
| Alternative Name: | ASXL1 (ASXL1 Products) |
| Background: | <p>This gene is similar to the Drosophila additional sex combs gene, which encodes a chromatin-binding protein required for normal determination of segment identity in the developing embryo. The protein is a member of the Polycomb group of proteins, which are necessary for the maintenance of stable repression of homeotic and other loci. The protein is thought to disrupt chromatin in localized areas, enhancing transcription of certain genes while repressing the transcription of other genes. The protein encoded by this gene functions as a ligand-dependent co-activator for retinoic acid receptor in cooperation with nuclear receptor coactivator 1. Mutations in this gene are associated with myelodysplastic syndromes and chronic myelomonocytic leukemia. Alternative splicing results in multiple transcript variants.Synonyms: Additional sex combs-like protein 1, KIAA0978, Putative Polycomb group protein ASXL1</p> |
| Molecular Weight: | 165432 Da |
| Gene ID: | 171023 |
| NCBI Accession: | NP_056153 |
| Pathways: | Retinoic Acid Receptor Signaling Pathway |

Application Details

| | |
|--------------------|--|
| Application Notes: | Optimal working dilution should be determined by the investigator. |
| Restrictions: | For Research Use only |

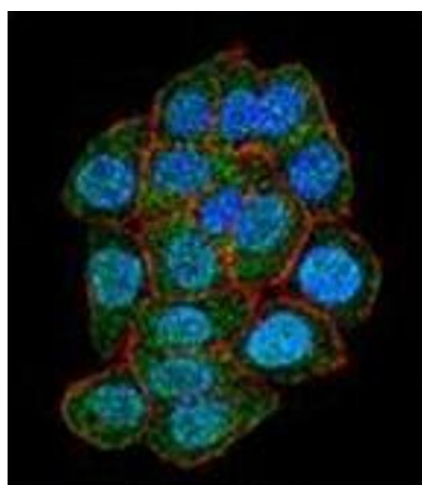
Handling

| | |
|--------------------|--|
| Format: | Liquid |
| Concentration: | 0.25 mg/mL |
| Buffer: | PBS, 0.09 % Sodium Azide |
| Preservative: | Sodium azide |
| Precaution of Use: | This product contains sodium azide: a POISONOUS AND HAZARDOUS SUBSTANCE which should be handled by trained staff only. |
| Handling Advice: | Avoid repeated freezing and thawing. |
| Storage: | 4 °C/-20 °C |
| Storage Comment: | Store the antibody undiluted at 2-8 °C for one month or (in aliquots) at -20 °C for longer. |



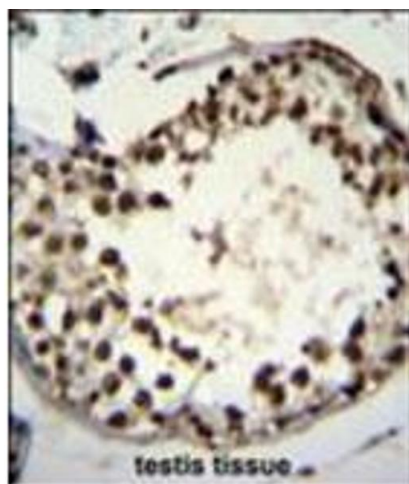
Flow Cytometry

Image 1. Flow Cytometric analysis of HeLa cells (Right Histogram) using ASXL1 antibody (Center) Cat.-No AP50279PU-N compared to a negative control cell (Left Histogram). FITC-conjugated goat-anti-rabbit secondary antibodies were used for the analysis.



Immunofluorescence

Image 2. Confocal immunofluorescent analysis of ASXL1 Antibody (Center) Cat.-No AP50279PU-N with HeLa cell followed by Alexa Fluor 488-conjugated Goat anti-Rabbit IgG (green). Actin filaments have been labeled with Alexa Fluor 555 phalloidin (red). DAPI was used to stain the cell nuclear (blue).



Immunohistochemistry (Paraffin-embedded Sections)

Image 3. Immunohistochemistry analysis in formalin fixed and paraffin embedded human testis tissue using ASXL1 Antibody followed by peroxidase conjugation of the secondary antibody and DAB staining.

Please check the [product details page](#) for more images. Overall 4 images are available for ABIN950543.