



Datasheet for ABIN950553
anti-ATG16L2 antibody (Middle Region)



[Go to Product page](#)

2 Images

Overview

Quantity:	0.4 mL
Target:	ATG16L2
Binding Specificity:	AA 284-312, Middle Region
Reactivity:	Human
Host:	Rabbit
Clonality:	Polyclonal
Application:	Western Blotting (WB), Immunohistochemistry (Paraffin-embedded Sections) (IHC (p)), Enzyme Immunoassay (EIA)

Product Details

Immunogen:	KLH conjugated synthetic peptide between 284-312 amino acids from the Central region of Human ATG16L2
Isotype:	Ig Fraction
Specificity:	This antibody recognizes Human ATG16L2. Other species not tested.
Purification:	Protein A column, followed by peptide affinity purification

Target Details

Target:	ATG16L2
Alternative Name:	ATG16L2 (ATG16L2 Products)
Background:	Synonyms: Autophagy-related protein 16-2, WDR80

Target Details

Molecular Weight:	68998 Da
Gene ID:	89849
NCBI Accession:	NP_203746

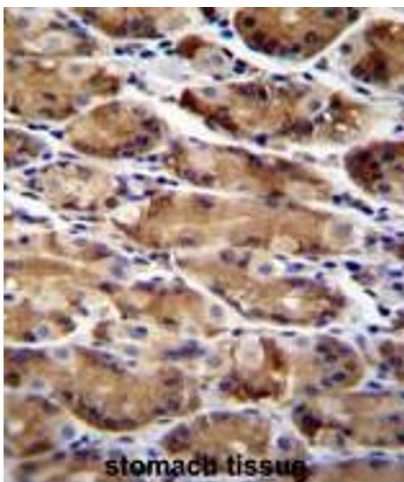
Application Details

Application Notes:	Optimal working dilution should be determined by the investigator.
Restrictions:	For Research Use only

Handling

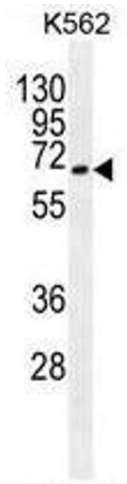
Format:	Liquid
Concentration:	0.25 mg/mL
Buffer:	PBS containing 0.09 % (W/V) Sodium Azide as preservative
Preservative:	Sodium azide
Precaution of Use:	This product contains sodium azide: a POISONOUS AND HAZARDOUS SUBSTANCE which should be handled by trained staff only.
Handling Advice:	Avoid repeated freezing and thawing.
Storage:	4 °C/-20 °C
Storage Comment:	Store undiluted at 2-8 °C for one month or (in aliquots) at -20 °C for longer.

Images



Immunohistochemistry (Paraffin-embedded Sections)

Image 1. Formalin Fixed, Paraffin Embedded human stomach tissue reacted with ATG16L2 Antibody (Center) followed by peroxidase conjugation of the secondary antibody and DAB staining.



Western Blotting

Image 2. Western blot analysis using ATG16L2 Antibody (Center) Cat.-No AP50287PU-N in K562 cell line lysates (35µg/lane). This demonstrates the ATG16L2 antibody detected the ATG16L2 protein (arrow).