

Datasheet for ABIN950554
anti-ATL1 antibody (C-Term)



[Go to Product page](#)

1 Image

Overview

Quantity:	0.4 mL
Target:	ATL1
Binding Specificity:	AA 476-504, C-Term
Reactivity:	Human
Host:	Rabbit
Clonality:	Polyclonal
Conjugate:	This ATL1 antibody is un-conjugated
Application:	Western Blotting (WB), Enzyme Immunoassay (EIA)

Product Details

Immunogen:	KLH conjugated synthetic peptide between 476-504 amino acids from the C-terminal region of human ATL1
Isotype:	Ig Fraction
Specificity:	This antibody reacts to Atlastin-1.
Cross-Reactivity (Details):	Species reactivity (tested):Human.
Purification:	Affinity chromatography on Protein A

Target Details

Target:	ATL1
Alternative Name:	Atlastin-1 / SPG3A (ATL1 Products)

Target Details

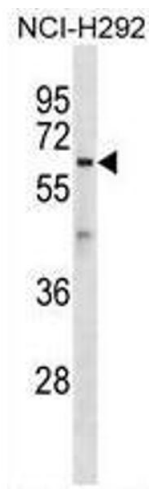
Background:	The protein encoded by this gene is a GTPase and a Golgi body transmembrane protein. The encoded protein can form a homotetramer and has been shown to interact with spastin and with mitogen-activated protein kinase kinase kinase 4. This protein may be involved in axonal maintenance as evidenced by the fact that defects in this gene are a cause of spastic paraplegia type 3. Three transcript variants encoding two different isoforms have been found for this gene.Synonyms: ATL1, Brain-specific GTP-binding protein, GBP-3, GBP3, GTP-binding protein 3, Guanine nucleotide-binding protein 3, Spastic paraplegia 3 protein A
Gene ID:	51062
NCBI Accession:	NP_001121185

Application Details

Application Notes:	Optimal working dilution should be determined by the investigator.
Restrictions:	For Research Use only

Handling

Format:	Liquid
Concentration:	0.25 mg/mL
Buffer:	PBS containing 0.09 % (W/V) sodium azide as preservative
Preservative:	Sodium azide
Precaution of Use:	This product contains sodium azide: a POISONOUS AND HAZARDOUS SUBSTANCE which should be handled by trained staff only.
Handling Advice:	Avoid repeated freezing and thawing.
Storage:	4 °C/-20 °C
Storage Comment:	Store the antibody undiluted at 2-8 °C for one month or (in aliquots) at -20 °C for longer.



Western Blotting

Image 1. ATL1 Antibody (C-term) western blot analysis in NCI-H292 cell line lysates (35µg/lane). This demonstrates the ATL1 antibody detected the ATL1 protein (arrow).