

Datasheet for ABIN950572
anti-ATP8A2 antibody (N-Term)[Go to Product page](#)

2 Images

Overview

Quantity:	0.4 mL
Target:	ATP8A2
Binding Specificity:	AA 296-326, N-Term
Reactivity:	Human
Host:	Rabbit
Clonality:	Polyclonal
Conjugate:	This ATP8A2 antibody is un-conjugated
Application:	Western Blotting (WB), Flow Cytometry (FACS), Enzyme Immunoassay (EIA)

Product Details

Immunogen:	KLH conjugated synthetic peptide between 296-326 amino acids from the N-terminal region of human ATP8A2
Isotype:	Ig Fraction
Specificity:	This antibody reacts to ATP8A2.
Cross-Reactivity (Details):	Species reactivity (tested):Human.
Purification:	Affinity chromatography on Protein A

Target Details

Target:	ATP8A2
Alternative Name:	ATP8A2 (ATP8A2 Products)

Target Details

Background:	Synonyms: ATP1B, ATPase class I type 8A member 2, ML-1, Probable phospholipid-transporting ATPase IB
Gene ID:	51761
NCBI Accession:	NP_057613

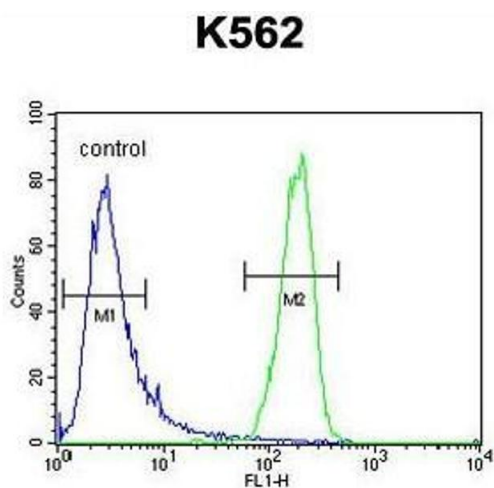
Application Details

Application Notes:	Optimal working dilution should be determined by the investigator.
Restrictions:	For Research Use only

Handling

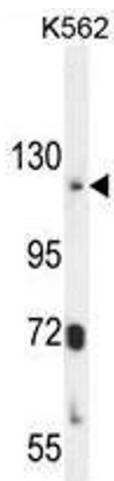
Format:	Liquid
Concentration:	0.25 mg/mL
Buffer:	PBS containing 0.09 % (W/V) sodium azide as preservative
Preservative:	Sodium azide
Precaution of Use:	This product contains sodium azide: a POISONOUS AND HAZARDOUS SUBSTANCE which should be handled by trained staff only.
Handling Advice:	Avoid repeated freezing and thawing.
Storage:	4 °C/-20 °C
Storage Comment:	Store the antibody undiluted at 2-8 °C for one month or (in aliquots) at -20 °C for longer.

Images



Flow Cytometry

Image 1. ATP8A2 Antibody (N-term) flow cytometric analysis of K562 cells (right histogram) compared to a negative control cell (left histogram). FITC-conjugated goat-anti-rabbit secondary antibodies were used for the analysis.



Western Blotting

Image 2. ATP8A2 Antibody (N-term) western blot analysis in K562 cell line lysates (35µg/lane). This demonstrates the ATP8A2 antibody detected the ATP8A2 protein (arrow).