

Datasheet for ABIN950573
anti-ATP8B2 antibody (N-Term)

2 Images

[Go to Product page](#)

Overview

Quantity:	0.4 mL
Target:	ATP8B2
Binding Specificity:	AA 21-51, N-Term
Reactivity:	Human
Host:	Rabbit
Clonality:	Polyclonal
Application:	Western Blotting (WB), Flow Cytometry (FACS), Enzyme Immunoassay (EIA)

Product Details

Immunogen:	KLH conjugated synthetic peptide between 21-51 amino acids from the N-terminal region of human ATP8B2
Isotype:	Ig Fraction
Specificity:	This antibody reacts to ATP8B2.
Cross-Reactivity (Details):	Species reactivity (tested):Human.
Purification:	Affinity chromatography on Protein A

Target Details

Target:	ATP8B2
Alternative Name:	ATP8B2 (ATP8B2 Products)
Background:	The protein encoded by this gene belongs to the family of P-type cation transport ATPases, and

Target Details

to the subfamily of aminophospholipid-transporting ATPases. The aminophospholipid translocases transport phosphatidylserine and phosphatidylethanolamine from one side of a bilayer to another. Alternatively spliced transcript variants encoding different isoforms have been identified.Synonyms: ATPID, ATPase class I type 8B member 2, KIAA1137, Probable phospholipid-transporting ATPase ID

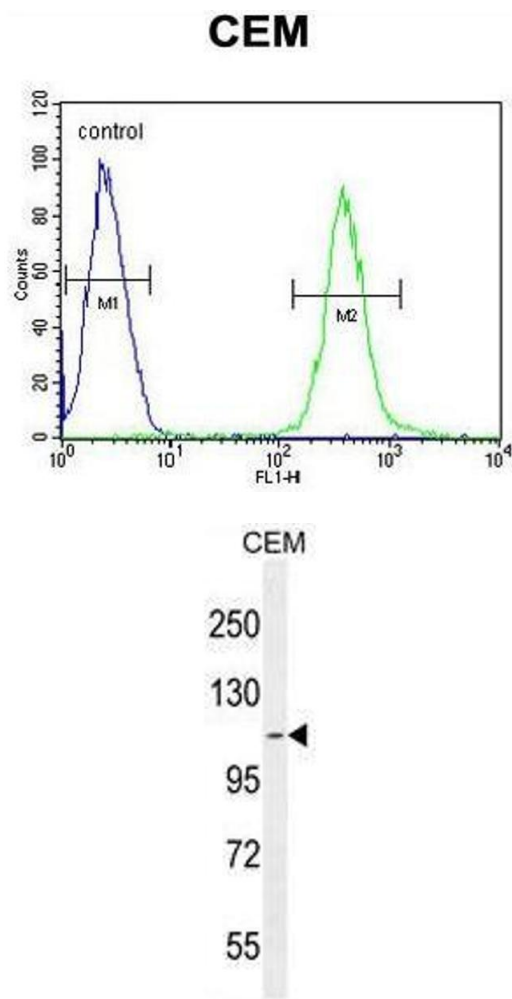
Gene ID:	57198
NCBI Accession:	NP_001005855

Application Details

Application Notes:	Optimal working dilution should be determined by the investigator.
Restrictions:	For Research Use only

Handling

Format:	Liquid
Concentration:	0.25 mg/mL
Buffer:	PBS containing 0.09 % (W/V) sodium azide as preservative
Preservative:	Sodium azide
Precaution of Use:	This product contains sodium azide: a POISONOUS AND HAZARDOUS SUBSTANCE which should be handled by trained staff only.
Handling Advice:	Avoid repeated freezing and thawing.
Storage:	4 °C/-20 °C
Storage Comment:	Store the antibody undiluted at 2-8 °C for one month or (in aliquots) at -20 °C for longer.



Flow Cytometry

Image 1. AT8B2 Antibody (N-term) flow cytometric analysis of CEM cells (right histogram) compared to a negative control cell (left histogram).FITC-conjugated goat-anti-rabbit secondary antibodies were used for the analysis.

Western Blotting

Image 2. AT8B2 Antibody (N-term) western blot analysis in CEM cell line lysates (35µg/lane).This demonstrates the AT8B2 antibody detected the AT8B2 protein (arrow).