

Datasheet for ABIN950581
anti-AVPI1 antibody (N-Term)

2 Images

[Go to Product page](#)

Overview

Quantity:	0.4 mL
Target:	AVPI1
Binding Specificity:	AA 63-91, N-Term
Reactivity:	Human
Host:	Rabbit
Clonality:	Polyclonal
Conjugate:	This AVPI1 antibody is un-conjugated
Application:	Western Blotting (WB), Enzyme Immunoassay (EIA)

Product Details

Immunogen:	KLH conjugated synthetic peptide between 63-91 amino acids from the N-terminal region of human AVPI1
Isotype:	Ig Fraction
Specificity:	This antibody reacts to AVP-induced protein 1.
Cross-Reactivity (Details):	Species reactivity (tested):Human.
Purification:	Affinity chromatography on Protein A

Target Details

Target:	AVPI1
Alternative Name:	AVP-Induced Protein 1 (AVPI1 Products)

Target Details

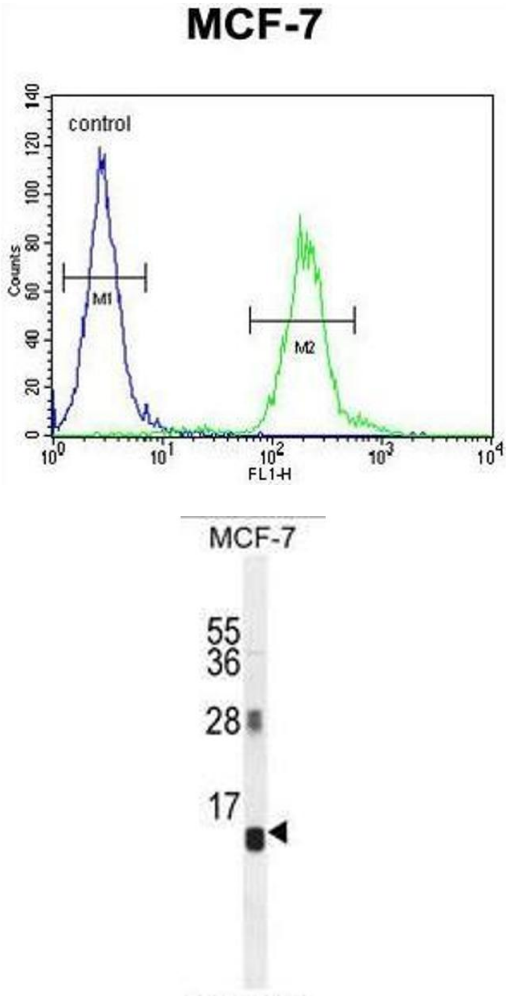
Background:	May be involved in MAP kinase activation, epithelial sodium channel (ENaC) down-regulation and cell cycling (By similarity).Synonyms: AVPI1, Arginine vasopressin-induced protein 1, NPD013, PP5395
Gene ID:	60370
NCBI Accession:	NP_068378

Application Details

Application Notes:	Optimal working dilution should be determined by the investigator.
Restrictions:	For Research Use only

Handling

Format:	Liquid
Concentration:	0.25 mg/mL
Buffer:	PBS containing 0.09 % (W/V) sodium azide as preservative
Preservative:	Sodium azide
Precaution of Use:	This product contains sodium azide: a POISONOUS AND HAZARDOUS SUBSTANCE which should be handled by trained staff only.
Handling Advice:	Avoid repeated freezing and thawing.
Storage:	4 °C/-20 °C
Storage Comment:	Store the antibody undiluted at 2-8 °C for one month or (in aliquots) at -20 °C for longer.



Flow Cytometry

Image 1. AVPI1 Antibody (N-term) flow cytometric analysis of MCF-7 cells (right histogram) compared to a negative control cell (left histogram).FITC-conjugated goat-anti-rabbit secondary antibodies were used for the analysis.

Western Blotting

Image 2. AVPI1 Antibody (N-term) western blot analysis in MCF-7 cell line lysates (35µg/lane).This demonstrates the AVPI1 antibody detected the AVPI1 protein (arrow).