

Datasheet for ABIN950582  
**anti-Axin antibody (C-Term)**



[Go to Product page](#)

2 Images

## Overview

Quantity:	0.4 mL
Target:	Axin (AXIN1)
Binding Specificity:	AA 717-746, C-Term
Reactivity:	Human
Host:	Rabbit
Clonality:	Polyclonal
Conjugate:	This Axin antibody is un-conjugated
Application:	Western Blotting (WB), Enzyme Immunoassay (EIA)

## Product Details

Immunogen:	KLH conjugated synthetic peptide between 717-746 amino acids from the C-terminal region of human AXIN1
Isotype:	Ig Fraction
Specificity:	This antibody reacts to Axin-1.
Cross-Reactivity (Details):	Species reactivity (tested):Human.
Purification:	Affinity chromatography on Protein A

## Target Details

Target:	Axin (AXIN1)
Alternative Name:	Axin-1 ( <a href="#">AXIN1 Products</a> )

## Target Details

**Background:** This gene encodes a cytoplasmic protein which contains a regulation of G-protein signaling (RGS) domain and a dishevelled and axin (DIX) domain. The encoded protein interacts with adenomatosis polyposis coli, catenin beta-1, glycogen synthase kinase 3 beta, protein phosphate 2, and itself. This protein functions as a negative regulator of the wingless-type MMTV integration site family, member 1 (WNT) signaling pathway and can induce apoptosis. The crystal structure of a portion of this protein, alone and in a complex with other proteins, has been resolved. Mutations in this gene have been associated with hepatocellular carcinoma, hepatoblastomas, ovarian endometriod adenocarcinomas, and medullablastomas. Two transcript variants encoding distinct isoforms have been identified for this gene. **Synonyms:** AXIN, AXIN1, Axis inhibition protein 1

**Gene ID:** 8312

**NCBI Accession:** [NP\\_003493](#)

**Pathways:** [WNT Signaling](#), [Sensory Perception of Sound](#), [Regulation of G-Protein Coupled Receptor Protein Signaling](#)

## Application Details

**Application Notes:** Optimal working dilution should be determined by the investigator.

**Restrictions:** For Research Use only

## Handling

**Format:** Liquid

**Concentration:** 0.25 mg/mL

**Buffer:** PBS containing 0.09 % (W/V) sodium azide as preservative

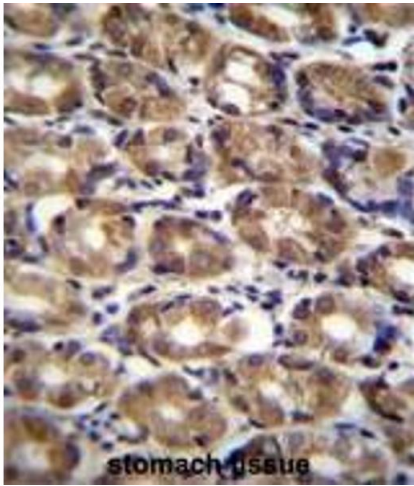
**Preservative:** Sodium azide

**Precaution of Use:** This product contains sodium azide: a POISONOUS AND HAZARDOUS SUBSTANCE which should be handled by trained staff only.

**Handling Advice:** Avoid repeated freezing and thawing.

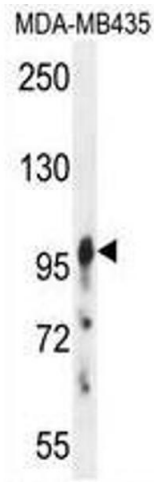
**Storage:** 4 °C/-20 °C

**Storage Comment:** Store the antibody undiluted at 2-8 °C for one month or (in aliquots) at -20 °C for longer.



**Immunohistochemistry (Paraffin-embedded Sections)**

**Image 1.** AXIN1 Antibody (C-term) immunohistochemistry analysis in formalin fixed and paraffin embedded human stomach tissue followed by peroxidase conjugation of the secondary antibody and DAB staining. This data demonstrates the use of AXIN1 Antibody (C-term) for immunohistochemistry. Clinical relevance has not been evaluated.



**Western Blotting**

**Image 2.** AXIN1 Antibody (C-term) western blot analysis in MDA-MB435 cell line lysates (35µg/lane). This demonstrates the AXIN1 antibody detected the AXIN1 protein (arrow).