

Datasheet for ABIN950594
anti-B4GALT6 antibody (C-Term)

3 Images

[Go to Product page](#)

Overview

| | |
|----------------------|--|
| Quantity: | 0.4 mL |
| Target: | B4GALT6 |
| Binding Specificity: | AA 322-350, C-Term |
| Reactivity: | Human |
| Host: | Rabbit |
| Clonality: | Polyclonal |
| Conjugate: | This B4GALT6 antibody is un-conjugated |
| Application: | Western Blotting (WB), Immunohistochemistry (Paraffin-embedded Sections) (IHC (p)), Enzyme Immunoassay (EIA) |

Product Details

| | |
|-----------------------------|--|
| Immunogen: | KLH conjugated synthetic peptide between 322-350 amino acids from the C-terminal region of human B4GALT6 |
| Isotype: | Ig Fraction |
| Specificity: | This antibody reacts to B4GALT6. |
| Cross-Reactivity (Details): | Species reactivity (tested):Human. |
| Purification: | Affinity chromatography on Protein A |

Target Details

| | |
|---------|---------|
| Target: | B4GALT6 |
|---------|---------|

Target Details

| | |
|-------------------|--|
| Alternative Name: | B4GALT6 (B4GALT6 Products) |
| Background: | <p>This gene is one of seven beta-1,4-galactosyltransferase (beta4GalT) genes. They encode type II membrane-bound glycoproteins that appear to have exclusive specificity for the donor substrate UDP-galactose, all transfer galactose in a beta1,4 linkage to similar acceptor sugars: GlcNAc, Glc, and Xyl. Each beta4GalT has a distinct function in the biosynthesis of different glycoconjugates and saccharide structures. As type II membrane proteins, they have an N-terminal hydrophobic signal sequence that directs the protein to the Golgi apparatus and which then remains uncleaved to function as a transmembrane anchor. By sequence similarity, the beta4GalTs form four groups: beta4GalT1 and beta4GalT2, beta4GalT3 and beta4GalT4, beta4GalT5 and beta4GalT6, and beta4GalT7. The enzyme encoded by this gene is a lactosylceramide synthase important for glycolipid biosynthesis. Synonyms: 4-GalTase 6, 4-galactosyltransferase 6, Beta-1, Beta-1, Beta4Gal-T6, UDP-Gal:beta-GlcNAc beta-1, UDP-galactose:beta-N-acetylglucosamine beta-1, b4Gal-T6</p> |
| Gene ID: | 9331 |
| NCBI Accession: | NP_004766 |
| Pathways: | Glycosaminoglycan Metabolic Process |

Application Details

| | |
|--------------------|--|
| Application Notes: | Optimal working dilution should be determined by the investigator. |
| Restrictions: | For Research Use only |

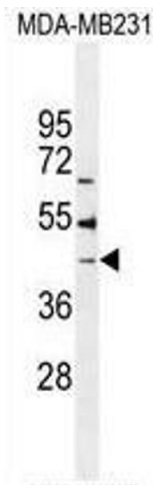
Handling

| | |
|--------------------|--|
| Format: | Liquid |
| Concentration: | 0.25 mg/mL |
| Buffer: | PBS containing 0.09 % (W/V) sodium azide as preservative |
| Preservative: | Sodium azide |
| Precaution of Use: | This product contains sodium azide: a POISONOUS AND HAZARDOUS SUBSTANCE which should be handled by trained staff only. |
| Handling Advice: | Avoid repeated freezing and thawing. |
| Storage: | 4 °C/-20 °C |
| Storage Comment: | Store the antibody undiluted at 2-8 °C for one month or (in aliquots) at -20 °C for longer. |



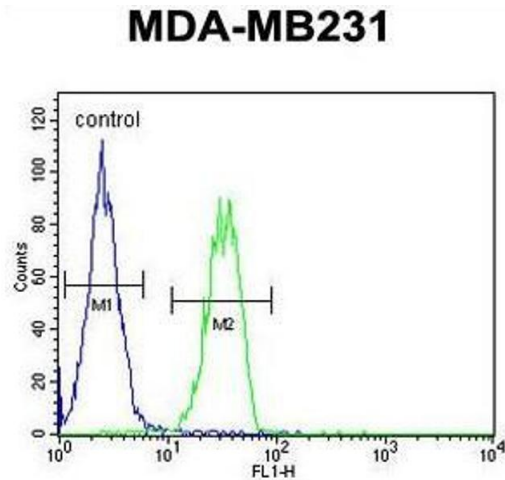
Immunohistochemistry (Paraffin-embedded Sections)

Image 1. B4GALT6 Antibody (C-term) immunohistochemistry analysis in formalin fixed and paraffin embedded human brain tissue followed by peroxidase conjugation of the secondary antibody and DAB staining. This data demonstrates the use of the B4GALT6 Antibody (C-term) for immunohistochemistry. Clinical relevance has not been evaluated.



Western Blotting

Image 2. B4GALT6 Antibody (C-term) western blot analysis in MDA-MB231 cell line lysates (35µg/lane). This demonstrates the B4GALT6 antibody detected the B4GALT6 protein (arrow).



Flow Cytometry

Image 3. B4GALT6 Antibody (C-term) flow cytometric analysis of MDA-MB231 cells (right histogram) compared to a negative control cell (left histogram). FITC-conjugated goat-anti-rabbit secondary antibodies were used for the analysis.