

Datasheet for ABIN950607  
**anti-BARX1 antibody (C-Term)**

## 2 Images

[Go to Product page](#)

## Overview

Quantity:	0.4 mL
Target:	BARX1
Binding Specificity:	AA 210-240, C-Term
Reactivity:	Human
Host:	Rabbit
Clonality:	Polyclonal
Conjugate:	This BARX1 antibody is un-conjugated
Application:	Western Blotting (WB), Enzyme Immunoassay (EIA)

## Product Details

Immunogen:	KLH conjugated synthetic peptide between 210-240 amino acids from the C-terminal region of human BARX1
Isotype:	Ig Fraction
Specificity:	This antibody reacts to BARX1.
Cross-Reactivity (Details):	Species reactivity (tested):Human.
Purification:	Affinity chromatography on Protein A

## Target Details

Target:	BARX1
Alternative Name:	BARX1 ( <a href="#">BARX1 Products</a> )

## Target Details

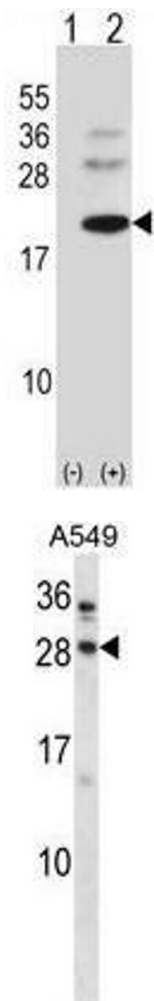
Background:	This gene encodes a member of the Bar subclass of homeobox transcription factors. Studies of the mouse and chick homolog suggest the encoded protein may play a role in developing teeth and craniofacial mesenchyme of neural crest origin. The protein may also be associated with differentiation of stomach epithelia.Synonyms: Homeobox protein BarH-like 1
Gene ID:	56033
NCBI Accession:	<a href="#">NP_067545</a>
Pathways:	<a href="#">Sensory Perception of Sound</a>

## Application Details

Application Notes:	Optimal working dilution should be determined by the investigator.
Restrictions:	For Research Use only

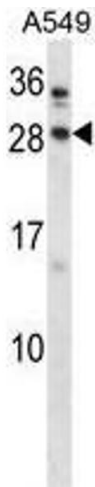
## Handling

Format:	Liquid
Concentration:	0.25 mg/mL
Buffer:	PBS containing 0.09 % (W/V) sodium azide as preservative
Preservative:	Sodium azide
Precaution of Use:	This product contains sodium azide: a POISONOUS AND HAZARDOUS SUBSTANCE which should be handled by trained staff only.
Handling Advice:	Avoid repeated freezing and thawing.
Storage:	4 °C/-20 °C
Storage Comment:	Store the antibody undiluted at 2-8 °C for one month or (in aliquots) at -20 °C for longer.



#### Western Blotting

**Image 1.** Western blot analysis of BARX1 (arrow) using rabbit polyclonal BARX1 Antibody (C-term) . 293 cell lysates (2 µg/lane) either nontransfected (Lane 1) or transiently transfected (Lane 2) with the BARX1 gene.



#### Western Blotting

**Image 2.** BARX1 Antibody (C-term) western blot analysis in A549 cell line lysates (35µg/lane).This demonstrates the BARX1 antibody detected the BARX1 protein (arrow).