

Datasheet for ABIN950618

anti-BCAT2 antibody (C-Term)**2** Images[Go to Product page](#)

Overview

Quantity:	0.4 mL
Target:	BCAT2
Binding Specificity:	AA 308-336, C-Term
Reactivity:	Human
Host:	Rabbit
Clonality:	Polyclonal
Conjugate:	This BCAT2 antibody is un-conjugated
Application:	Western Blotting (WB), Immunohistochemistry (Paraffin-embedded Sections) (IHC (p)), Enzyme Immunoassay (EIA)

Product Details

Immunogen:	KLH conjugated synthetic peptide between 308-336 amino acids from the C-terminal region of human BCAT2
Isotype:	Ig Fraction
Specificity:	This antibody reacts to BCAT2.
Cross-Reactivity (Details):	Species reactivity (tested):Human.
Purification:	Saturated Ammonium Sulfate (SAS) precipitation

Target Details

Target:	BCAT2
---------	-------

Target Details

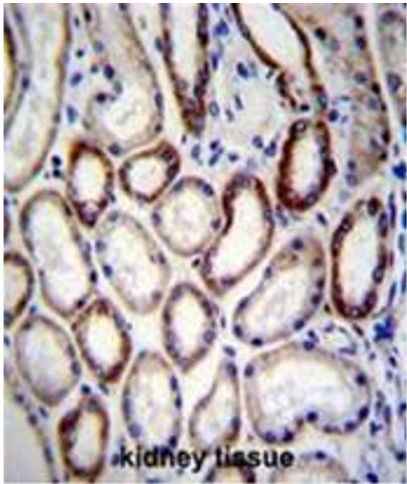
Alternative Name:	BCAT2 (BCAT2 Products)
Background:	This gene encodes a branched chain aminotransferase found in mitochondria. The encoded protein forms a dimer that catalyzes the first step in the production of the branched chain amino acids leucine, isoleucine, and valine. Multiple transcript variants encoding different isoforms have been found for this gene.Synonyms: BCAT(m), BCATM, BCT2, Branched-chain-amino-acid aminotransferase mitochondrial, ECA40
Gene ID:	587
NCBI Accession:	NP_001158245

Application Details

Application Notes:	Optimal working dilution should be determined by the investigator.
Restrictions:	For Research Use only

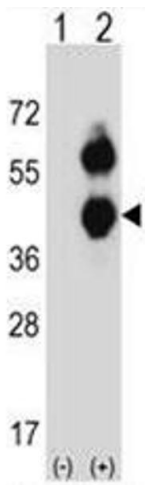
Handling

Format:	Liquid
Concentration:	0.25 mg/mL
Buffer:	PBS containing 0.09 % (W/V) sodium azide as preservative
Preservative:	Sodium azide
Precaution of Use:	This product contains sodium azide: a POISONOUS AND HAZARDOUS SUBSTANCE which should be handled by trained staff only.
Handling Advice:	Avoid repeated freezing and thawing.
Storage:	4 °C/-20 °C
Storage Comment:	Store the antibody undiluted at 2-8 °C for one month or (in aliquots) at -20 °C for longer.



Immunohistochemistry (Paraffin-embedded Sections)

Image 1. BCAT2 Antibody (C-term) immunohistochemistry analysis in formalin fixed and paraffin embedded human kidney tissue followed by peroxidase conjugation of the secondary antibody and DAB staining. This data demonstrates the use of BCAT2 Antibody (C-term) for immunohistochemistry. Clinical relevance has not been evaluated.



Western Blotting

Image 2. Western blot analysis of BCAT2 (arrow) using rabbit polyclonal BCAT2 Antibody (C-term). 293 cell lysates (2 µg/lane) either nontransfected (Lane 1) or transiently transfected (Lane 2) with the BCAT2 gene.