

Datasheet for ABIN950634  
**anti-BCL3 antibody (Middle Region)**[Go to Product page](#)

## 4 Images

## Overview

Quantity:	0.4 mL
Target:	BCL3
Binding Specificity:	AA 248-277, Middle Region
Reactivity:	Human, Mouse
Host:	Rabbit
Clonality:	Polyclonal
Conjugate:	This BCL3 antibody is un-conjugated
Application:	Western Blotting (WB), Flow Cytometry (FACS), Immunofluorescence (IF), Immunohistochemistry (Paraffin-embedded Sections) (IHC (p)), Enzyme Immunoassay (EIA)

## Product Details

Immunogen:	KLH conjugated synthetic peptide between 248~277 amino acids from the Center region of human BCL3
Isotype:	Ig Fraction
Specificity:	This antibody reacts to Bcl-3.
Cross-Reactivity (Details):	Species reactivity (tested): Human and Mouse.
Purification:	Affinity chromatography on Protein A

## Target Details

Target:	BCL3
---------	------

## Target Details

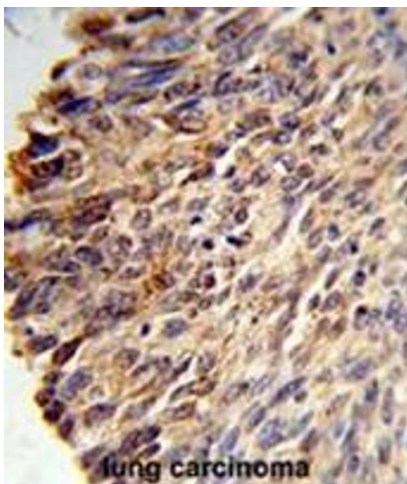
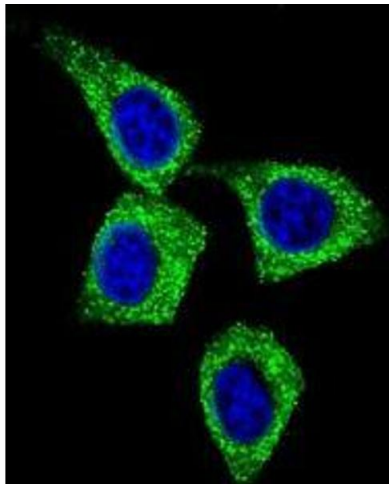
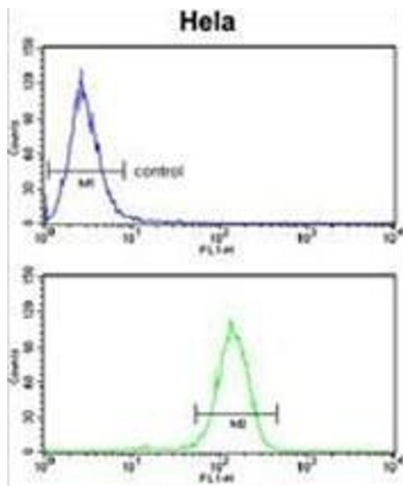
Alternative Name:	Bcl-3 ( <a href="#">BCL3 Products</a> )
Background:	BCL3 is a proto-oncogene candidate. It is identified by its translocation into the immunoglobulin alpha-locus in some cases of B-cell leukemia. The protein contains seven ankyrin repeats, which are most closely related to those found in I kappa B proteins. This protein functions as a transcriptional co-activator that activates through its association with NF-kappa B homodimers. Synonyms: B-cell lymphoma 3-encoded protein, BCL3, BCL4, D19S37
Gene ID:	602
NCBI Accession:	<a href="#">NP_005169</a>
Pathways:	<a href="#">NF-kappaB Signaling</a> , <a href="#">Maintenance of Protein Location</a> , <a href="#">Protein targeting to Nucleus</a>

## Application Details

Application Notes:	Optimal working dilution should be determined by the investigator.
Restrictions:	For Research Use only

## Handling

Format:	Liquid
Concentration:	0.25 mg/mL
Buffer:	PBS containing 0.09 % (W/V) sodium azide as preservative
Preservative:	Sodium azide
Precaution of Use:	This product contains sodium azide: a POISONOUS AND HAZARDOUS SUBSTANCE which should be handled by trained staff only.
Handling Advice:	Avoid repeated freezing and thawing.
Storage:	4 °C/-20 °C
Storage Comment:	Store the antibody undiluted at 2-8 °C for one month or (in aliquots) at -20 °C for longer.



### Flow Cytometry

**Image 1.** BCL3 Antibody (Center) flow cytometry analysis of HeLa cells (bottom histogram) compared to a negative control cell (top histogram). FITC-conjugated goat-anti-rabbit secondary antibodies were used for the analysis.

### Immunofluorescence

**Image 2.** Confocal immunofluorescent analysis of BCL3 Antibody (Center) (Cat#AP50358PU-N) with HeLa cell followed by Alexa Fluor 488-conjugated goat anti-rabbit IgG (green). DAPI was used to stain the cell nuclear (blue).

### Immunohistochemistry (Paraffin-embedded Sections)

**Image 3.** Formalin-fixed and paraffin-embedded human lung carcinoma reacted with BCL3 Antibody (Center), which was peroxidase-conjugated to the secondary antibody, followed by DAB staining. This data demonstrates the use of this antibody for immunohistochemistry; clinical relevance has not been evaluated.

Please check the [product details page](#) for more images. Overall 4 images are available for ABIN950634.