

Datasheet for ABIN950637

anti-BCL7A antibody (N-Term)[Go to Product page](#)**1** Image

Overview

Quantity:	0.4 mL
Target:	BCL7A
Binding Specificity:	AA 1-30, N-Term
Reactivity:	Human
Host:	Rabbit
Clonality:	Polyclonal
Conjugate:	This BCL7A antibody is un-conjugated
Application:	Western Blotting (WB), Enzyme Immunoassay (EIA)

Product Details

Immunogen:	KLH conjugated synthetic peptide between 1-30 amino acids from the N-terminal region of human BCL7A
Isotype:	Ig Fraction
Specificity:	This antibody reacts to Bcl-7A.
Cross-Reactivity (Details):	Species reactivity (tested):Human.
Purification:	Affinity chromatography on Protein A

Target Details

Target:	BCL7A
Alternative Name:	Bcl-7A (BCL7A Products)

Target Details

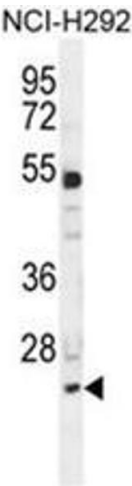
Background:	This gene is directly involved, with Myc and IgH, in a three-way gene translocation in a Burkitt lymphoma cell line. As a result of the gene translocation, the N-terminal region of the gene product is disrupted, which is thought to be related to the pathogenesis of a subset of high-grade B cell non-Hodgkin lymphoma. The N-terminal segment involved in the translocation includes the region that shares a strong sequence similarity with those of BCL7B and BCL7C. Two transcript variants encoding different isoforms have been found for this gene.Synonyms: B-cell CLL/lymphoma 7 protein family member A, BCL7A
Gene ID:	605
NCBI Accession:	NP_001019979

Application Details

Application Notes:	Optimal working dilution should be determined by the investigator.
Restrictions:	For Research Use only

Handling

Format:	Liquid
Concentration:	0.25 mg/mL
Buffer:	PBS containing 0.09 % (W/V) sodium azide as preservative
Preservative:	Sodium azide
Precaution of Use:	This product contains sodium azide: a POISONOUS AND HAZARDOUS SUBSTANCE which should be handled by trained staff only.
Handling Advice:	Avoid repeated freezing and thawing.
Storage:	4 °C/-20 °C
Storage Comment:	Store the antibody undiluted at 2-8 °C for one month or (in aliquots) at -20 °C for longer.



Western Blotting

Image 1. BCL7A Antibody (N-term) western blot analysis in NCI-H292 cell line lysates (35µg/lane). This demonstrates the BCL7A antibody detected the BCL7A protein (arrow).