

Datasheet for ABIN950646
anti-Bestrophin 2 antibody (C-Term)

2 Images

[Go to Product page](#)

Overview

Quantity:	0.4 mL
Target:	Bestrophin 2 (BEST2)
Binding Specificity:	AA 381-411, C-Term
Reactivity:	Human
Host:	Rabbit
Clonality:	Polyclonal
Conjugate:	This Bestrophin 2 antibody is un-conjugated
Application:	Western Blotting (WB), Immunohistochemistry (Paraffin-embedded Sections) (IHC (p)), Enzyme Immunoassay (EIA)

Product Details

Immunogen:	KLH conjugated synthetic peptide between 381~411 amino acids from the C-terminal region of human BEST2
Isotype:	Ig Fraction
Specificity:	This antibody reacts to Bestrophin-2.
Cross-Reactivity (Details):	Species reactivity (tested):Human.
Purification:	Affinity chromatography on Protein A

Target Details

Target:	Bestrophin 2 (BEST2)
---------	----------------------

Target Details

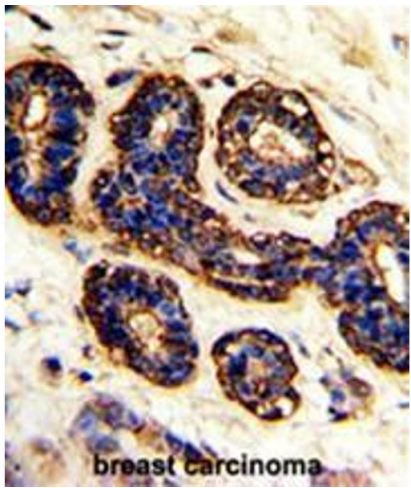
Alternative Name:	Bestrophin-2 (BEST2 Products)
Background:	<p>BEST2 is a member of the bestrophin gene family of anion channels. Bestrophin genes share a similar gene structure with highly conserved exon-intron boundaries, but with distinct 3' ends.</p> <p>Bestrophins are transmembrane proteins that contain a homologous region rich in aromatic residues, including an invariant arg-phe-pro motif. Synonyms: BEST2, VMD2L1, Vitelliform macular dystrophy 2-like protein 1</p>
Gene ID:	54831
NCBI Accession:	NP_060152

Application Details

Application Notes:	Optimal working dilution should be determined by the investigator.
Restrictions:	For Research Use only

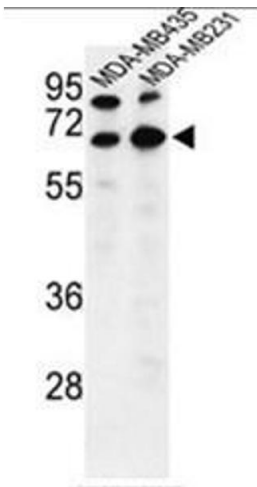
Handling

Format:	Liquid
Concentration:	0.25 mg/mL
Buffer:	PBS containing 0.09 % (W/V) sodium azide as preservative
Preservative:	Sodium azide
Precaution of Use:	This product contains sodium azide: a POISONOUS AND HAZARDOUS SUBSTANCE which should be handled by trained staff only.
Handling Advice:	Avoid repeated freezing and thawing.
Storage:	4 °C/-20 °C
Storage Comment:	Store the antibody undiluted at 2-8 °C for one month or (in aliquots) at -20 °C for longer.



Immunohistochemistry (Paraffin-embedded Sections)

Image 1. Formalin-fixed and paraffin-embedded human breast carcinoma with BEST2 Antibody (C-term), which was peroxidase-conjugated to the secondary antibody, followed by DAB staining. This data demonstrates the use of this antibody for immunohistochemistry; clinical relevance has not been evaluated.



Western Blotting

Image 2. Western blot analysis of BEST2 Antibody (C-term) in MDA-MB435,MDA-MB231 cell line lysates (35µg/lane).BEST2 (arrow) was detected using the purified Pab.