



[Go to Product page](#)

Datasheet for ABIN950657
anti-BEX1 antibody (Middle Region)

3 Images

Overview

Quantity:	0.4 mL
Target:	BEX1
Binding Specificity:	AA 66-94, Middle Region
Reactivity:	Human
Host:	Rabbit
Clonality:	Polyclonal
Conjugate:	This BEX1 antibody is un-conjugated
Application:	Western Blotting (WB), Flow Cytometry (FACS), Immunohistochemistry (Paraffin-embedded Sections) (IHC (p)), Enzyme Immunoassay (EIA)

Product Details

Immunogen:	KLH conjugated synthetic peptide between 66-94 amino acids from the Central region of human BEX1
Isotype:	Ig Fraction
Specificity:	This antibody reacts to BEX1.
Cross-Reactivity (Details):	Species reactivity (tested):Human.
Purification:	Affinity chromatography on Protein A

Target Details

Target:	BEX1
---------	------

Target Details

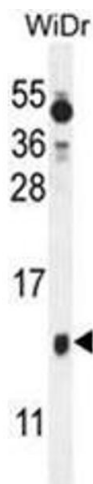
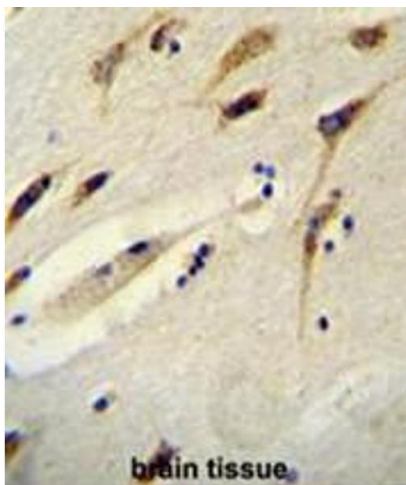
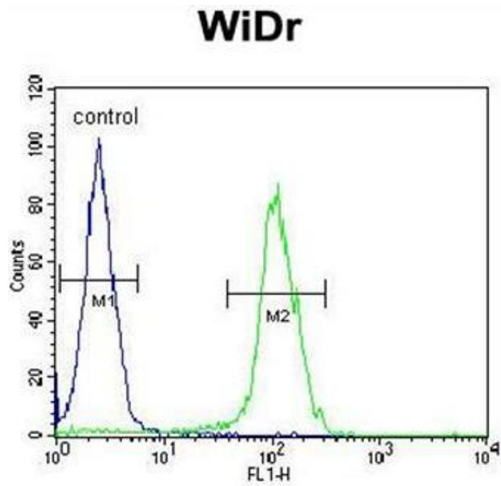
Alternative Name:	BEX1 (BEX1 Products)
Background:	Signaling adapter molecule involved in p75NTR/NGFR signaling. Plays a role in cell cycle progression and neuronal differentiation. Inhibits neuronal differentiation in response to nerve growth factor (NGF). May act as a link between the cell cycle and neurotrophic factor signaling, possibly by functioning as an upstream modulator of receptor signaling, coordinating biological responses to external signals with internal cellular states (By similarity).Synonyms: Brain-expressed X-linked protein 1
Gene ID:	55859
NCBI Accession:	NP_060946
Pathways:	Neurotrophin Signaling Pathway

Application Details

Application Notes:	Optimal working dilution should be determined by the investigator.
Restrictions:	For Research Use only

Handling

Format:	Liquid
Concentration:	0.25 mg/mL
Buffer:	PBS containing 0.09 % (W/V) sodium azide as preservative
Preservative:	Sodium azide
Precaution of Use:	This product contains sodium azide: a POISONOUS AND HAZARDOUS SUBSTANCE which should be handled by trained staff only.
Handling Advice:	Avoid repeated freezing and thawing.
Storage:	4 °C/-20 °C
Storage Comment:	Store the antibody undiluted at 2-8 °C for one month or (in aliquots) at -20 °C for longer.



Flow Cytometry

Image 1. BEX1 Antibody (Center) flow cytometric analysis of WiDr cells (right histogram) compared to a negative control cell (left histogram). FITC-conjugated goat-anti-rabbit secondary antibodies were used for the analysis.

Immunohistochemistry (Paraffin-embedded Sections)

Image 2. BEX1 Antibody (Center) immunohistochemistry analysis in formalin fixed and paraffin embedded human brain tissue followed by peroxidase conjugation of the secondary antibody and DAB staining. This data demonstrates the use of the BEX1 Antibody (Center) for immunohistochemistry. Clinical relevance has not been evaluated.

Western Blotting

Image 3. BEX1 Antibody (Center) western blot analysis in WiDr cell line lysates (35µg/lane). This demonstrates the BEX1 antibody detected the BEX1 protein (arrow).